

# Department of Civil Engineering Annual Report 2008



DTU Civil Engineering  
Annual Report 2008

**Editor:**

Charlotte Welin

**Layout:**

Helle A. Meulengrath

**Frontpicture:**

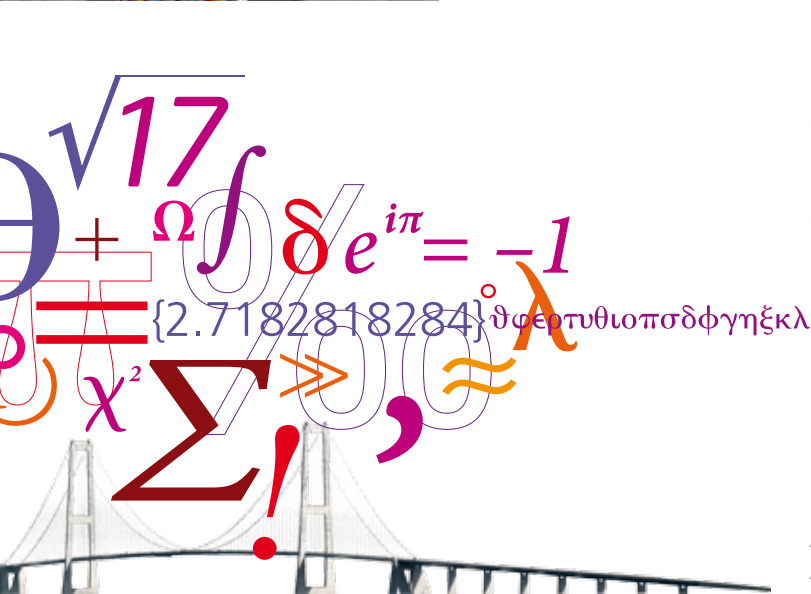
PhD student Anne Bagger, DTU Civil Engineering.  
Photo: Simon Klein Knudsen/MAKWERK

Printed in Denmark by Schultz Grafisk, Albertslund  
ISBN: 978-87-87336-03-1

DTU Civil Engineering  
Technical University of Denmark  
Brovej, Building 118  
DK-2800 Kgs. Lyngby

Phone: +45 4525 1700  
Fax: +45 4588 3282

byg@dtu.dk  
www.byg.dtu.dk



# Contents

From the Head of Department	05
Organisation	06
Cable vibration research and the Fehmern crossing	07
Conference on indoor air quality at DTU	08
Research in international focus	10
Sustainable buildings can effectively combat climate change	11
A new partnership between engineers and architects	12
Need to strengthen road engineering in research and education	14
IRS@BYG is alive and prospering	15
A good start at DTU creates better students	16
A new Geenlandic industrial PhD programme	18
CDIO - learning by doing	19
Prediction of reinforcement corrosion in concrete structures	20
Publications	22
Journal papers, ISI-indexed	22
Journal papers, peer reviewed	24
Books	24
Book chapters	24
Conference papers, peer reviewed	25
Reports	33
PhD theses	33
Patents	34
MSc theses	34
BEng theses	35
BSc theses	37
Staff, education, research, finance	38

Management Report 2008:

## A new era for DTU Civil Engineering

DTU Civil Engineering is a university department within the building and construction sector.

Our mission is research, education, innovation, and public sector consultancy. Through our work we contribute to the generation of social and commercial value.

Our vision is to become a leading European Civil and Architectural Engineering department and a preferred partner for companies, authorities, and institutions in the building and construction sector.

### Strategy and organisation

By beginning of 2008 all the major goals of the department's Strategy 2003-08 were fulfilled. An international research panel concluded that the department is following a clear road map for elevation of the research, and that some of our research groups had moved their level to "high international". Also a revision of all the study programmes following the Bologna Declaration on higher education was completed. Thus the basis was established for a new strategy for the coming years. In stead of writing a new static strategy, the department decided to use DTU's planning cycle as the framework for the strategy process. In April 2008 we held a strategy seminar and developed a new rolling four year development plan (in Danish: UdviklingsMål og Virkemidler, UMV 2009-12), The UMV is now the document that implements DTU's general strategy at department level and sets the strategic goals for the department.

By 1st January 2008 a new organisation following the university merger was established. The International Centre for Indoor Climate and Energy, ICIEE, became a part of DTU Civil Engineering. ICIEE has brought a strong group of dedicated researchers to the department and several new projects and study programme revisions were initiated as a result of the synergy between ICIEE and the Section for Building Services and Building Physics. The new organisation of DTU Civil Engineering has further focused the department's research on technology for the benefit of the building sector.

### Research

DTU Civil Engineering focuses research on the areas: Construction Materials, Geotechnics, Structural Engineering, Indoor Climate, Building Physics and Energy, and Building Design.

2008 was a year of scientific conferences organised by DTU Civil Engineering: ICIEE organised The 11th International Conference on Indoor Air Quality and Climate with more than 1100 scientists from all over the Globe. The Indoor Air Conference is the biggest and most prestigious conference in its field and the event in Copenhagen was a great success. The Section for Building Physics and Services organised the Nordic Symposium in Building Physics 2008 in Copenhagen, this conference attracted more than 250 Nordic researchers and was followed by the first "DTU Climate Technology Workshop" on Sustainable Buildings with more than 100 scientist, industrialists and public sector managers. In Sisimiut, Greenland ARTEK organised the conference: Sustainable Energy in the Arctic. The Section for Construction Materials rounded off the year with the Salt Weathering on Buildings and Stone Sculptures conference in Copenhagen with more than 100 scientists from 21 countries.

Two major strategic applications were granted: The Realdania Research Centre for Indoor Climate and Health, CISBO, was established with a budget of 40 Mkr. over five years in collaboration with the Danish universities and research centres AAU, SBI, AU, KU, and NFA, and the National Council for Strategic Research



granted 25 Mkr. to a Research Centre for Zero Emission Building, ZEB, with participants from the High Tech Network for Low Energy Building, LavEByg. LavEByg is hosted by DTU Civil Engineering.

A major step forward for the research is our continuous collaboration with Femern Bælt AS. Femern Bælt is the owner of the coming rail and road link between Denmark and Germany across the Femern Belt. The collaboration includes several PhD projects in the fields of cable vibration and wind engineering, large diameter piling, and concrete research. We hope to be further involved in this mega civil engineering project in the coming years.

#### Private and Public Sector Research and Consultancy

DTU Civil Engineering wishes to contribute to the development of an innovative and research based construction sector. In order to do this we seek to inspire and collaborate with industry and authorities in common research and innovation projects. In 2008 the department participated in the creation of a national coordination board for building and construction research (In Danish: Koordinations- og InitiativGruppen for Byggeerhvervet, KIG) under the auspices of the Ministry of Economics and Business Affairs. KIG will publish a national research plan for construction research in April 2009 and KIG is working to increase public and private investment in research and innovation in construction related topics.

#### Education

DTU Civil Engineering manages DTU's education programmes in Civil, Architectural and Arctic Engineering. The annual uptake to the BSc and BEng programmes has increased since 2007 and admission is now restricted using admission grades.

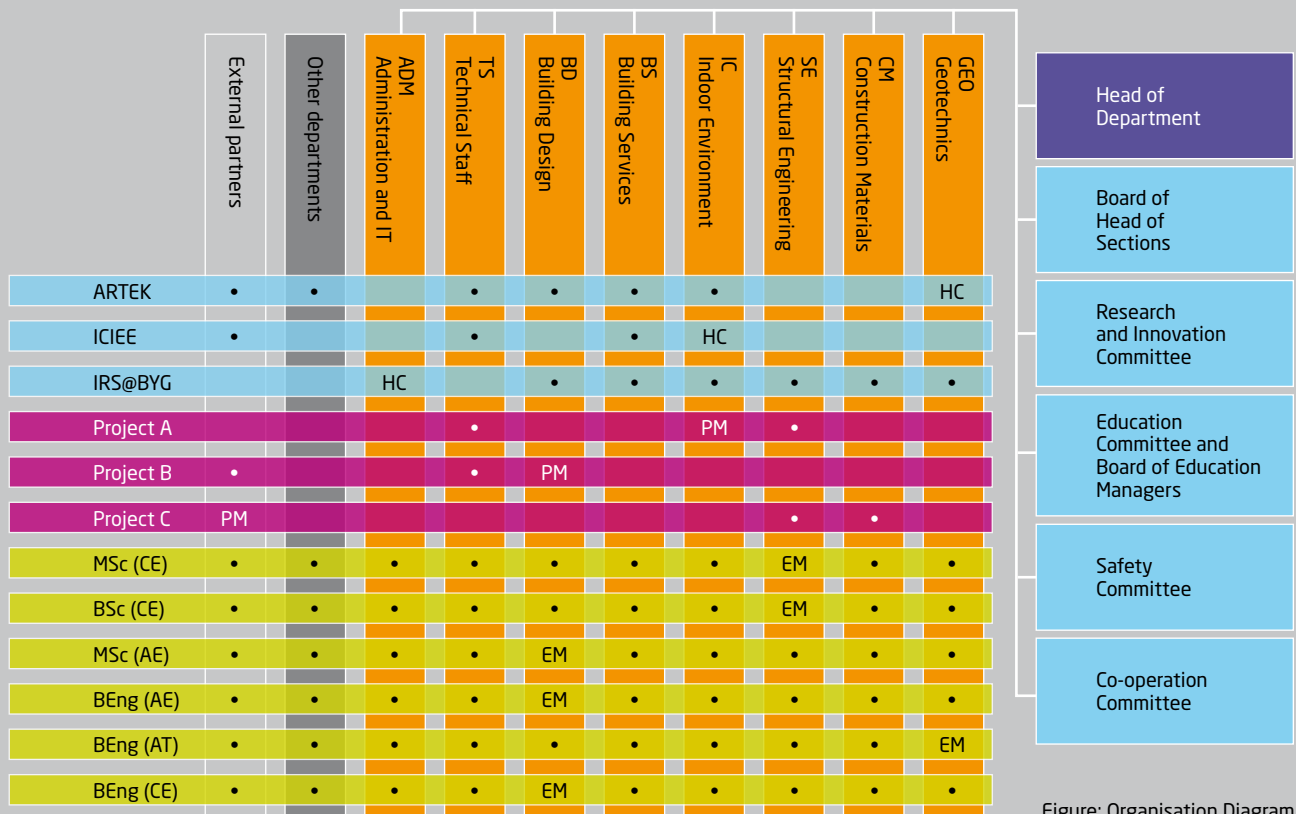
On all BEng programmes we introduced the CDIO concept. CDIO is an international initiative originally established by MIT and KTH with the aim to improve undergraduate engineering education. The vision is to provide students with an education that stresses engineering fundamentals that are set in the context of Conceiving - Designing - Implementing - Operating (CDIO) real-world systems and products.

The new MSc in Architectural Engineering had its first uptake in February 2008. The curriculum is under development and new courses has been introduced. We expect that this new master education will attract a number of international students in the coming years and an international profile is being developed.

All in all the year 2008 marks the beginning of a new era in the continuous positive development of DTU Civil Engineering.

Head of Department  
Jacob Steen Møller, PhD  
jsm@byg.dtu.dk

# Organisation



HC: Head of Centre  
 PM: Project Manager  
 EM: Education Manager  
 •: Project/Education Participant

## Sections:

- Building Design  
Professor Kristian Hertz
- Building Physics and Services  
Professor Carsten Rode
- Construction Materials  
Professor Ole Mejlhede Jensen
- Geotechnics  
Associate professor Ole Hededal
- Indoor Environment  
Professor Bjarne Olesen
- Structural Engineering  
Professor Henrik Stang
- Administration and IT  
Søren Burcharth
- The department for Laboratories and Workshops  
Jørgen Bjørnbak Hansen

## Centres:

- IRS@BYG, The International Research School for Civil Engineering. Head of

## Department Jacob S. Møller

- ARTEK, Arctic Technology Centre.  
Professor Arne Villumsen.
- ICIEE, Centre for Indoor Environment and Energy  
Professor Bjarne W. Olesen.

## Study Programmes and Education Managers:

- Civil Engineering (M.Sc).  
Associate Professor John Forbes Olesen
- Building Technology (BSc).  
Professor Per Goltermann
- Architectural Engineering (M.Sc).  
Professor Kristian Hertz
- Architectural Engineering (BEng).  
Associate Professor Lotte Bjerregaard
- Building Engineer (BEng).  
Associate Professor Egil Borcherssen
- Arctic Technology (BEng).  
Associate Professor  
Hans Peter Christensen.

## Advisory Board:

- Professor (adj.) Louis Becker Architect  
MAA, AIA, RIBA. Design Director,  
Partner, Henning Larsen Architects
- CEO Ingelise Bogason, ALECTIA
- Division Director Niels Kjeldgaard,  
MTHøjgaard
- Head of Office Lasse Sundahl, Danish  
Enterprise and Construction Authority
- Senior Vice President Carsten Winther  
Group Technology, Rockwool International.



# Cable vibration research and the Fehmern crossing

"The Øresund Bridge cables." Photo: Christos T. Georgakis



Associate Professor Christos T. Georgakis  
Section for Structural Engineering  
cg@byg.dtu.dk

DTU Byg has assembled a world-class team of researchers to undertake a research project, which aims to provide design guidelines for the mitigation of wind-induced vibrations of cables on long-span cable-supported bridges.

The newly proposed crossing between Denmark and Germany will push the limits in engineering design. The selection of a cable-supported bridge will lead to one of the longest bridges of its type in the world. The challenges in designing a bridge are immense and the prospects of cable-vibrations will undoubtedly preoccupy both the bridge owners and designers. In this connection, Femern Bælt A/S is funding an €1.8 million collaborative research project to examine ways of reducing the probability of cable-vibrations on a bridge solution.

## Danish Cable Vibration Group

In the fall of 2004, a group of engineers gathered at DTU to discuss the lingering problem of cable vibrations on structures. Cable vibrations have long affected many structures and the recent willingness of bridge owners and designers to openly discuss the vibrations afflicting their bridges made the meeting even more relevant. The group agreed on a path: collaboration with the goal of better understanding and controlling wind-induced vibrations of cables. The members - Sund & Bælt A/S, COWI A/S, Force Technology and the Department of Civil Engineering of the Technical University of Denmark, DTU Byg, - would later form the core of the Danish Cable Vibration Group.

Research activity within the group has since been rife. In response to ongoing hanger vibrations on the Great East Belt Bridge - connecting Jutland and Sealand, a COWI sponsored industrial PhD was initiated in 2005 with the title "Understanding and simulating wind-induced vibrations of iced vertical cables." The research work, currently being undertaken by Henrik Gjelstrup, has led to the development of a new theoretical model for the prediction of aerodynamic instabilities of cables - one that COWI has indicated they shall adopt for the future prediction of cable vibrations early in the design process of a bridge.

## Fehmern Crossing

With the prospect of a choice of a cable-supported bridge for the Fehmern crossing, a larger collaborative research proposal on cable-vibrations was approved by Femern Bælt A/S in early 2008. To support the research project, a new state-of-the-art climatic wind tunnel was also approved. With the research contract signed in August 2008, DTU Byg, Femern Bælt, Sund & Bælt and Force Technology entered a collaborative research agreement for 5 years.

Wind-induced cable vibrations are predominately due to buffeting, vortex shedding, galloping or wake buffeting. DTU Byg will be coordinating an international team of researchers from the Universities of Bristol, Stavanger and Reggio Calabria to examine these vibration mechanisms and find ways of mitigating them. Furthermore, the dedicated climatic wind tunnel, capable of producing sub-zero temperatures and precipitation, will give the research team a quantum leap in capabilities for researching the excitation mechanisms and the means of vibration control.

Large cumbersome external dampers and partially effective aerodynamic countermeasures are the only known means for mitigating cable vibrations. Nevertheless, investments in innovation for an engineering project of this size are generally limited due to the inherent risk associated with them. One of the main motivations for the research team will be its ability to suggest improvements and innovation in cable design early in the Fehmern Bridge design process. The current research could lead directly to design guidelines that the bridge's final design would have to adhere to.

In recognition of the current activity in the field, DTU Byg has been provisionally selected to co-host the International Symposium on Cable Dynamics in Copenhagen in 2011.



*The conference president Prof. Bjarne W. Olesen opens the technical part of the conference at DTU.  
Photo: Andreas Szekacs*

## Conference on indoor air quality at DTU

Participants from around 50 countries met in Copenhagen in order to discuss how the researchers may help providing a healthy and comfortable indoor climate. 731 papers and 33 forums were presented and the evenings gave place to a number of social events.

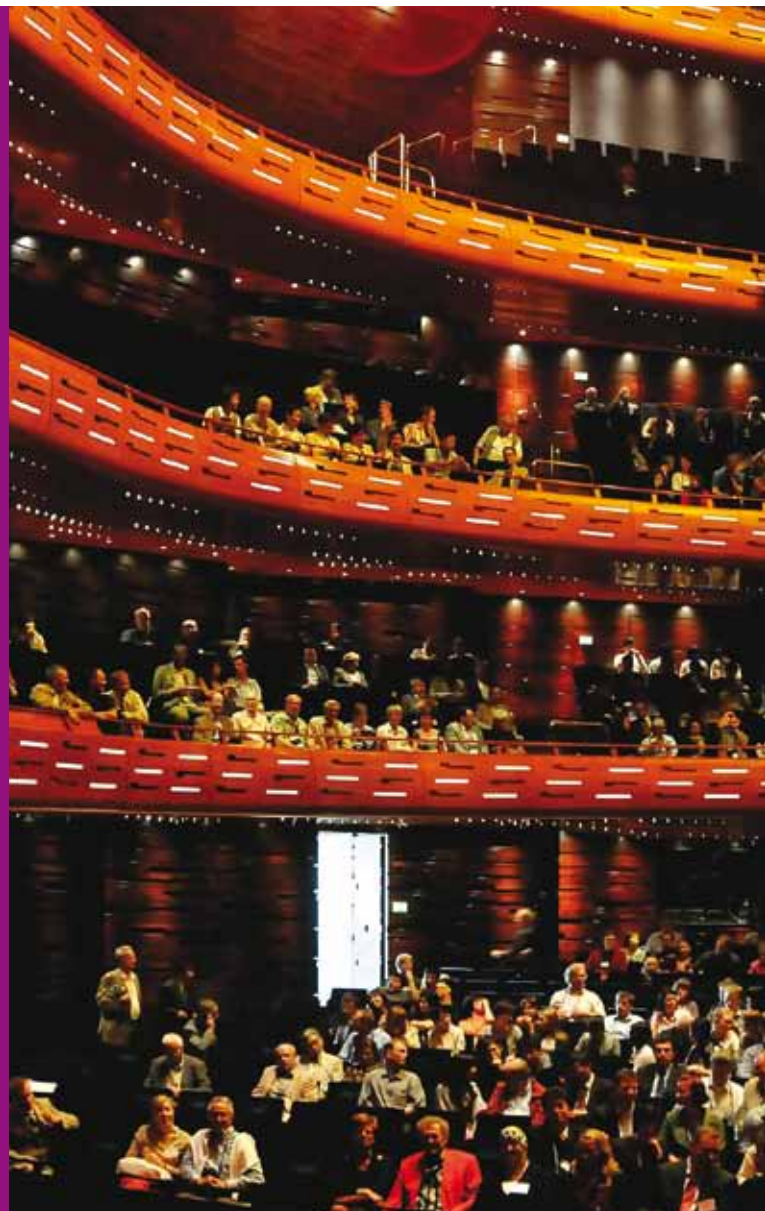


Professor Bjarne W. Olesen  
Section for Indoor Environment  
International Centre for Indoor Environment and Energy  
bwo@byg.dtu.dk

More than 1200 researchers from approx 50 countries participated in the 11th International Conference on indoor air quality and climate - 'Indoor Air 2008' - at the Technical University of Denmark (DTU). The conference returned to Copenhagen 30 years after the conference was held for the first time in 1978 with as few as 47 papers. The Technical University of Denmark holds a central place in the world for the advancement of the science and practice of providing healthy and comfortable indoor air and was at the previous Indoor Air 2005 in Beijing elected to organise the next conference. The conference took place 17-22 August and was at the previous Indoor Air 2005 in Beijing elected to organise the next conference and involved participants from medicine, engineering, architecture and related fields. 731 papers, eleven plenary presentations and 33 forums were presented and often, as many as eight events took place at the same time.

### Latest research results presented

The congress was organised by the International Centre for Indoor Environment and Energy of DTU Civil Engineering with Professor Bjarne W. Olesen as president and Associate Professor Pawel



Wargocki and Post doc Peter Strøm-Tejsten as Vice-chairs. The national organising committee included members of several Danish research groups from Aalborg University, Århus University, National Research Institute for Occupational Health, and Institute of Technology. The conference covered all aspects of indoor air and climate and its influence on peoples' health, comfort and productivity. We spend more than 90 percent of our time in indoor environments including our homes, our workplaces and our vehicles. More than 40 percent of all energy use worldwide is for buildings to provide an acceptable indoor climate. Therefore, it is essential to provide an optimal indoor environment in an energy efficient manner. The latest research results were presented at the congress, together with examples on how an optimal indoor environment is achieved in a sustainable manner. The congress addressed various types of indoor environment including residential buildings, offices, schools, industry, commercial, and transportation.

### Excellent facilities

DTU provided excellent facilities for the participants with plenary sessions held in the sport halls and parallel sessions in Building





*Most of the participants followed the opening ceremony and entertainment in the Opera. Photo: Rodney Aarup/Andreas Szekacs*

306. In addition, poster sessions took place in 302, 303 and 101, where also a small exhibition took place. Ironically some of the meeting rooms had many of the same indoor air issues that the conference was intended to help address like too high temperature, odour and insufficient ventilation.

Most of the participants stayed in hotels downtown Copenhagen and used public transportation to get to DTU. Bus-train pass was included in the registration. Copenhagen provided excellent facilities for the social events like the registration and opening ceremony in the Opera, with a magnificent performance of the Royal Ballet and Opera. Copenhagen invited the participants to a reception at the City Hall followed by an evening in Tivoli, and the conference dinner took place in Wallmans Saloons including a fantastic show. As one of the participants accompanied by his wife said: "I have always told my wife about how boring it is to attend conferences; but now she does not believe me anymore".

It was only possible to organise this conference and to invite 11 top keynote speakers due to the generous support from several sponsors like Rockwool, Uponor, Halton, Lindab, System Air, Exhausto, Swegon, Danish Engineering Society, Real Dania and DTU.



*Participants are networking at the reception in the Opera. Photo: Rodney Aarup*



# Research in international focus

An international technical committee "Electrokinetic processes in Civil and Environmental Engineering" chaired by DTU Civil Engineering is newly initiated. Increased fundamental understanding on the use of electrokinetics for e.g. removal of salt from sandstone and heavy metals from polluted soil is the aim of the committee.



Associate professor Lisbeth M. Ottosen  
Section for Construction Materials  
lo@byg.dtu.dk

Looking at these two photos - a sandstone sculpture where the face is lost due to salt decay and the soil, which is so polluted that the vegetation is limited to a few types of mosses - the apparent shared issue is damage. However, the two types of damages are so different that it is not obvious that the solution may be found within the same scientific area - electrokinetics.

In laboratory scale it has been shown that sandstone can efficiently be desalinated and heavy metal polluted soil can be remediated by means of an applied electric field. When an electric field is applied to a moist porous material different transport processes are obtained. On the contrary to mass transport in a pressure gradient, the transport processes obtained in the applied electric field includes transport in the smallest pores, even pores of nanometer size, and this fact is important when utilizing electrical fields for solving problems as those in the photos.

## International committee

There are though important fundamental issues, which are not adequately understood in order to foresee the outcome when scaling up the methods. A new research project "Fundamental of Electrokinetics in In-homogenous Matrices" was funded in the autumn 2008 by the Danish Agency for Science, Technology and Innovation, and the aim of this project is to fill in the most important fundamental knowledge gaps to bring implementation of electrokinetic methods closer.

Increased fundamental understanding is also the focus of a newly initiated international technical committee "Electrokinetic processes in Civil and Environmental Engineering" (chaired by DTU Civil



Sandstone sculpture severely damaged by salts. Photo: Lisbeth Ottosen



Soil polluted from wood preservation. The vegetation is sparse due to the high concentration of heavy metals. Photo: Lisbeth Ottosen

Engineering, DTU Byg). The committee is scientifically sponsored by RILEM and has participation of leading experts from 5 continents. The committee is the first wide collaboration between civil and environmental engineers who has in common the utilization of electrokinetic transport processes and it is anticipated that the interdisciplinary collaboration will be highly beneficial to both groups. Thus at DTU Civil Engineering the fundamental of electrokinetics is addressed through intense fundamental and applied research and international collaboration.

## Huge problem

Salt decay of historic monuments is a huge problem worldwide and at the international conference "Salt Weathering on Buildings and Stone Sculptures" (organized by DTU Civil Engineering with co-organizers from other important Danish actors in the field) focus was set on fundamental and practical issues related to this type of decay.

Preliminary results for electrokinetic desalination of sandstone were presented at the conference. Systematic research in desalination of sandstone using electrokinetics has not previously been conducted and the interest in the DTU Byg results was huge because they showed very efficient salt removal from a high and problematic level to a harmless level. The electrokinetic desalination research with sandstone has been conducted in laboratory scale with different types of sandstone and no limit in relation to stone type has been seen so far. The research has been supported by Augustinus Fonden and Bergiafonden and due to the encouraging results, the research will continue towards implementation.

# Sustainable buildings can effectively **combat climate change**

Energy efficient houses play a decisive role in reducing CO<sub>2</sub> emissions. Therefore the development and implementation of sustainable technologies must be accelerated. This was the conclusion of a climate workshop at the Technical University of Denmark in June.



Research assistant Henrik Tommerup  
Section for Building Physics and Services  
hmt@byg.dtu.dk



New highly insulated low energy home with cavity wall with an inner and outer brick wall. Photo: Henrik Tommerup



Insulation of existing exterior walls under construction in typical home from the 70's. Photo: Rockwool



Multi-storey property after a façade renovation with an improved insulation and a new rain shield. Photo: Henrik Tommerup

DTU Civil Engineering and DTU Management Engineering organized a workshop on Sustainable Buildings that took place on June 19 2008 at the Technical University of Denmark in Lyngby, Denmark. The workshop was the first of a series of workshops and conferences arranged by the DTU Climate Change Technologies programme (see [www.dtu.dk/climate](http://www.dtu.dk/climate)) leading up to the Climate Summit COP 15 in Copenhagen December 2009. The participants in the workshop were representatives from companies involved in the building sector and the authorities along with researchers. The companies that participated are vital to the Danish production of energy saving products, consultants in design and operation, and contractors.

In a key note speech, Claude Lenglet, Director of R&D at Bouygues Construction of France and Co-leader of the private-public-partnership on energy efficient buildings (E2B JTI) said that the scientific community agrees that all countries must drastically and rapidly reduce their CO<sub>2</sub> emissions and that energy efficient houses play a decisive role in this. He further stated that buildings use 40 percent of the total EU energy consumption and that the built environment generates 1/3 of Green House Gasses in Europe. Replacement rate remains very small (1 to 2 percent per year) and new buildings are still far from being really energy efficient. Therefore, we should now provide solutions at a large scale. Business as usual is not an option.

As the replacement rate in Europe is very small it is especially energy renovation of the existing building stock and also energy supply systems that can contribute to solve climate change problems. To a large extent, the technologies to lower the energy requirement of the building stock are there, they just need to be implemented appropriately.

## Urgent action is needed

To accelerate the development and implementation of sustainable technologies and strategies for reducing CO<sub>2</sub> emissions from buildings, efforts in the following areas are needed:

- A revitalized energy planning with planning in different scales and solutions reflecting the local context
- Innovative organizations, e.g. new ways of handling energy savings etc, Energy Service Companies, public-private partnerships etc.
- Closer cooperation, updated education and more research based knowledge in the built environment
- Strengthened technical educations, more "knowing generalists", training of craftsmen
- Focus on Life Cycle Cost, i.e. operation and maintenance and the environmental impact during the lifetime
- Periodic energy certification of building – like the Danish scheme for cars (e.g. every 5 years). Could be relevant to make one integrated certification scheme including both the energy and physical condition aspects.
- Better building energy requirements: differentiated requirements (worthy of preservation, age etc.), general simplification, control and inspection schemes
- Incentives: cheap loans, investment subsidies, tax advantages, and the providing of standard solutions, off-the-shelf renovation packages, broad energy advising for private house owners and good examples on energy efficient new and renovation of existing buildings

The general attitude at the workshop was that we face large and serious climate change problems that need urgent action. The built environment is an obvious area to put effort into because of the large and cost-effective energy saving potential and potential for Renewable Energy-based supply systems for buildings.

The recommendations from the workshop will be presented at a high-level conference in September 2009, where industrial, governmental and scientific perspectives on climate change issues will be addressed.



# A new partnership between engineers and architects

A collaboration between DTU Civil Engineering and Henning Larsen Architects aims at investigating the possibilities and effects of implementing technical knowledge in the early sketching process in order to design energy efficient, functional and aesthetically beautiful buildings and cities.



PhD student Jakob Strømman-Andersen  
Section for Building Physics and Services  
jasta@byg.dtu.dk

PhD student Martin Vraa Nielsen  
Section for Building Physics and Service  
mavni@byg.dtu.dk

PhD student Michael Jørgensen  
Section for Building Physics and Services  
mijo@byg.dtu.dk



1.

How shall we design our future cities and buildings so that they become both energy efficient, functional and at the same time aesthetically beautiful? This question is three new PhD projects at DTU Civil Engineering trying to answer through studies of the way we design and organize our surroundings. The projects started in fall of 2008.

The projects are sponsored by the foundation Realdania and carried out in collaboration with Henning Larsen Architects. In their motivation Realdania writes: The present projects have a good possibility of becoming the spearhead for how the collaboration between the two trade groups (architects and engineers, red.) can evolve. It will also contribute to a softening of the rigid professional demarcations – which will benefit the building of a sustainable environment.”

The projects revolve around the same hypothesis: it is possible to qualify the basis of decisions when designing future cities and buildings through technical scientific sustainability analyses. All projects have energy efficient buildings as a focal point, but try to determine the potential within three different scales.

## Scale

The underlying basis is a realization of the close relationship between urban planning, the building and the façade that, not only require technical knowledge, but also a new design process.

## Large scale - integrated Energy Design in Urban Planning.

Jakob Strømman-Andersen does research in the design of future

urban plans and their influence on the buildings energy consumption. So far focus has been pointed at the optimization of the individual building and its systems, their operation and maintenance. However, the design of the individual building and its contextual placement should always be a result of the urban geometry. By considering the building as an isolated unit, the interaction between the surroundings and the buildings energy performance is neglected.

The study is morphological and every considered parameter is related to the urban geometry. The project does not have a fully diagnostic goal. Furthermore the goal is not to supply exact measurements of the energy consumption at the urban level, but to set up comparable values that dynamically can be used in an integrated design process.

## Medium scale - Integrated Energy Design of larger Buildings.

Michael Jørgensen does research in the design of future buildings with focus on the problematics that arise between building physics, climate, geometry, component and system solutions. The thesis is that if one is able to analyze and optimize the organization of rooms in regard to the energy consumption, one can improve the basis of decision for the building geometry and thereby contribute to the development of a new type of architecture where the spatiality itself is optimized in relation to low energy consumption. The goal is that the method and the model should function as an “intelligent” tool to aid the creative process through a basis of dynamic analyses at the early stages of the design process.



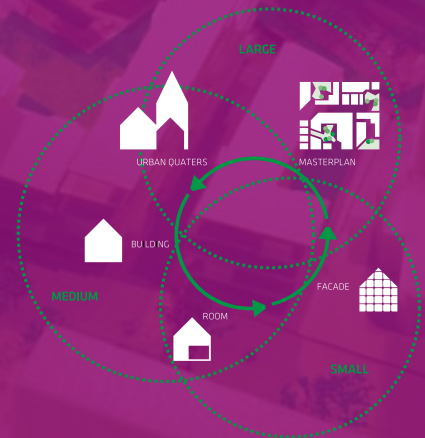


1. The proposal for the extension of FIH-bank headquarters shows a façade that has been designed with respect to minimizing direct sunlight impacts on the thermal and visual environment in the building, without limiting the view of the surroundings. This results in optimal daylight conditions plus good indoor thermal environment and since no external screening is needed, a reduction in maintenance costs.

2. In proposal for the new school in Ørestaden the façade is optimized with respect to strict demands for both functionality, energy and indoor environment. The division of windows with regards to view and especially daylight, minimizes the over-all glass area which in combination with a number of other initiatives, results in a building that meets the demands for class 1 in terms of both low-energy-building and indoor environment.

3. The proposal for the new urban area Västra Dockan in Malmö operates with a holistic and technical scientific vision for the urban spaces and buildings. This results in unique possibilities for the outdoor comfort level and energy reductions, because the effects from, for example; shade from surrounding buildings can be taken into account, as the impact of wind and daylight conditions from the varying urban landscape designs is considered.

Integrated design works across scales. The understanding that the façade, the building and the masterplan are closely tied provides the basis for Integrated Energy Design (IED) and means that a variety of parameters are considered throughout the design process."



### Small scale - Integrated Energy Design of the Building Envelope.

Martin Wrå Nielsen does research in the design of future facades and their dynamic potential and subsequently their impact on the buildings overall energy consumption and indoor climate. The thesis is that a great potential exists in considering the dynamic possibilities of the façade through involvement of engineering knowledge. Thus will a greater degree of adjustment and adaptability result in a more optimal utilization of the present resources in form of daylight and solar energy.

A dynamic façade can furthermore, in collaboration with architects, become a source of development regarding aesthetics and design with technical knowledge as design facilitator. Thereby the purpose of the project becomes partly a clarification of the facades problematics and potential including the known solutions, partly an investigation of conventional design methods and their problem areas and subsequently suggestions for a solution.

### A new Design Process

All three PhD studies deal with energy efficient buildings and have great focus on the process. Consequently a parameter such as Integrated Energy Design (IED) runs like a red thread throughout the research projects. It is done because of the realization that the preliminary design choices, such as the width of the streets and the orientation, geometry and the overall expression of the building have great effect on the overall energy consumption of the building. Parameters, which engineers rarely have an opportunity to

have an influence on the traditional design process because of their late involvement when a number of crucial decisions already have been made.

The concept behind IED is a closer cooperation between engineers and architects. Therefore the research is carried out in collaboration with Henning Larsen Architects, which gives an opportunity to investigate the possibilities and the effect of implementing technical knowledge already in the sketching process. Fundamentally the aim is to advocate a more rational approach, where design choices are analyzed technically in regard to energy consumption and indoor climate thus obtaining a more informed process so that the designer or architect makes the informed and "correct" decisions from the start.

### Perspective

Joined, the projects therefore search to necessitate solutions, which can fulfil the increasing demands for energy efficiency and sustainability, which have also become very important parameters in architectural competitions. The close collaboration between engineers and architects is therefore essential in order to obtain a more open and rational process, which can meet the stricter demands of the future for low energy consumption and good indoor climate, without compromising the architecture.

# Need to strengthen road engineering in research and education

A report from DTU Civil Engineering and the Danish Road Directorate shows that university research and education in road engineering have been neglected in recent years. Following the report DTU Civil Engineering has strengthened the field at the department and the relations to the Danish Road Institute.



As the pictures suggest, the need for road engineers is great, since the traffic load is increasing and decaying of roads is expanding; resulting in a greater need for constructing and renovating roads. Photo: Danish Road Directorate



Assistant Professor Maj-Britt Quitzau  
Section for Planning and Management  
of the Built Environment  
DTU Management Engineering  
maqu@man.dtu.dk

The road sector is of high socio-economic priority in Denmark. Heavy investments are made in road infrastructure in order to ensure mobility in the Danish society. However, little emphasis has been put on ensuring research and education in the field of road engineering, although this is a prerequisite for professional advancement and recruitment of qualified candidates within the road sector. As a result, road engineering has to a great extent been phased out at Danish universities, with severe effects on the road sector.

The Department of Civil Engineering of the Technical University of Denmark, DTU Byg, in cooperation with the Danish Road Directorate has worked out a report of the necessity to strengthen research and university education within road engineering at Danish universities. The report was published in January 2008, and based on a number of qualitative interviews with central stakeholders in the Danish road sector (including authorities, advisors and developers) and Danish universities.

The report shows that stakeholders in the Danish road sector express concerns about recruitment of candidates, especially at master and PhD levels. The stakeholders bemoan the little interest shown for road engineering among newly qualified candidates. They feel that it is both necessary to strengthen the knowledge development in road engineering (in terms of research) and to expand the basis of recruitment of qualified candidates. This need of strengthening research and education in universities is substantiated by conversations with scientists at Danish universities.

## A strengthened education

The report recommends a strategic focus on re-establishing a strong research environment in road engineering in Denmark



in order to close the current gap in knowledge and lack of human resources. Such a research environment not only ensures further research, but also an improved basis for the higher education of road engineers.

Three necessary initiatives are pointed out:

1. Greater acknowledgement of research and innovation in road engineering
2. Establishment of strong research environments in road engineering
3. Assure a greater share of synergy and cooperation between stakeholders in the field.

Following the report, DTU Byg has taken initiatives to strengthen research and education in road engineering at the department. Besides continuing a close dialogue with stakeholders in the road sector, the section of Geotechnics at DTU Byg in 2008 had a visit from a renowned specialist in road pavements, Professor Hosin Lee from the University of Iowa, in order to formulate a research vision and to strengthen the relations to the Danish Road Institute. Also, the Arctic Technology Centre of the Technical University of Denmark has established a road laboratory both at DTU Byg and in Greenland, sponsored by the Greenlandic home rule government, in order to support research and education activities in road engineering under arctic conditions. Finally, a new position as associate or assistant professor in road construction has been advertised to be filled in during spring 2009.

With the launch of these activities, DTU Byg is pushing for a revival of the field of road engineering, but such a revival can only be successful, if the initiatives are supported by stakeholders in the road sector and by political initiatives, the report concludes.



## IRS@BYG is alive and prospering

2008 was a good year for The International Research School for Civil Engineering with a continuously growing number of new PhD students. The future looks bright for the school with international collaboration and several co-financed PhD projects.



*PhD student Anne Bagger, 32 years, from the Section for Structural Engineering is one of 56 PhD students at DTU Civil Engineering. She studies faceted shell structures in glass and joined the department in 2006. Anne Bagger graduated from DTU Civil Engineering in 2001 and came to the Technical University of Denmark from a position in the engineering company Rambøll Danmark A/S where she designed steel and glass structures. Today she has her own company. Photo: Simon Klein Knudsen/MAKWERK*



Associate Professor Hans Janssen  
Deputy manager of IRS@BYG  
haj@byg.dtu.dk

The International Research School for Civil Engineering (IRS@BYG) was launched on January 1st 2005. Since its launch in 2005, the research school has steadily grown and currently gathers 56 PhD students. Of these, 18 have started in 2008, compared to on average 14 starting students in 2006 and 2007. The International Research School for Civil Engineering is hence living up to the growing expectations of the Technical University of Denmark, DTU, concerning the education of PhD students. A lot has happened for the research school in 2008 and evolutions can be seen on many fronts: internal and external collaboration, internal and external communication, and financial support to school and student

### Internal and external collaboration

At the start of 2008 the Section of Planning and Management of Building Processes left the Department of Civil Engineering DTU Byg, to join the new Department of Planning Engineering. The section however remains part of the research school, and we hope for a rewarding further collaboration. At the same time, the Section and Centre for Indoor Climate and Energy joined the research school, permitting us to collaborate more closely on themes like indoor climate and sustainable buildings.

The same theme is the driving force for the newly founded Graduate School for Sustainable Energy, in which the research school collaborates with similar schools from the Technical Universities of Munchen (Germany) and Eindhoven (Netherlands). This Graduate School is one of the first particular results of the European University Alliance between DTU, TUE and TUM.

### Internal and external communication

Internally, the 'departmental PhD days' have been succeeded by 'sectional PhD seminars'. These allow the PhD students to present

their current results to their peers, from which they can receive more in-depth feedback. The first such seminar in the Section of Building Physics and Services was considered a success by both the presenters and the audience.

Externally, the merits of obtaining a PhD degree have been presented to future potential PhD students through the 'Become a PhD in Civil Engineering' event. At this info seminar, some 25 Master students were introduced to the many aspects of a PhD project by staff from DTU's PhD office, by current DTU Byg PhD students, and by PhD's from the 'field'. Some of the participants are at present in the starting phase of their PhD, and the event will certainly be repeated in 2009.

### Support to school and PhD students

In November 2007, the International Research School for Civil Engineering was awarded with a 1.200.000 DKK Quality Enhancement grant by Forskings- og Innovationsstyrelsen. This grant has enabled the research school to support the organisation of several PhD summer schools and the 'pre-doctoral' hiring of promising PhD students.

Finally, in May 2008 the research school submitted its application 'Enhanced Research and Synergy in the Built Environment' to the Samfinansierede Stipendier call from Forskings- og Innovationsstyrelsen. That application was awarded with 2.475.000 DKK in November 2008, allowing the research school to start four co-financed PhD projects in 2009.

As you can see, a lot has happened for the research school in 2008, and we aim at continuing this trend in 2009.

## A good start at DTU creates better students

The experience at DTU Civil Engineering, DTU Byg, is that a good start for the new students with an intense mix of social and teaching activities, leads to happy, hard-working, enthusiastic students with a good network – and to students who are a pleasure to teach in the courses.

*Students enjoying the high view from 12th floor – nice view of the site. Photo: Per Goltermann*



Professor Per Goltermann  
Education Manager  
pg@byg.dtu.dk

At the Department of Civil Engineering, DTU Byg, the BSc-students are offered an introduction RUS-tour a week before the official semester start. This tour is 100 percent organized by the students association and provides detailed information about DTU, the rules of the university, dormitories etc.. During the tour the students are organised in vector-groups of 8-10 new students, headed by a vector (an older student on 3rd or 5th semester).

The vector group will be the core group in the beginning of the studies and will normally be used as study group in the courses in engineering mathematics and physics on the first semesters. The group meets weekly with the vector, who guides the freshmen in their studies in the first semester and brief them about the aspects of living a new life. The group typically meets once a week. The vector also invites the students to social activities, followed by a weekend tour in the mid-semester so that the students will be able to build a strong network in the class.

The vector is supported by a tutor (an associated professor). The group tutor is introduced to the students and the group before the



RUS-tour. The tutor meets the individual student a number of times during the semester and he has the responsibility for guiding the students in selection of courses or other aspects beyond the vectors experience.

Two independent surveys carried out in 2008 showed that 96-98 percent of the students thought that the semester start from a purely professional point of view had been good or very good while 85 percent were content or very content with the semester start from a social point of view.

### A nice surprise

The actual study at DTU Byg begins with an initial course “Engineering work”, which is an introduction to the study and later life as a civil engineer. The students work in changing groups on 4-5 problems, ranging from the design, construction, testing and autopsy of a bridge over testing and analyzing building materials, estimating bridges with building mechanics and optimization of the design, free hand drawing and CAD to the building energy design of a house. These problems do not only act as introduction to different





*Introduction to the construction site, safety and the building process with all its challenges in high-rise structures. Photo: Per Goltermann*

technical areas, they also show the new students, that they are actually able to understand and solve more problems, than they expect – which comes as a pleasant surprise for many.

The course contains also excursions to building sites, lectures by young engineers from private companies (role models) and introductory lectures to different specialization areas in order to facilitate the later choices of courses.

This approach to the study and the social life as a student at DTU leads to a very strong network in the class already in the first semester, where all students have worked together with approximately 35 percent of the class and met the whole class in a number of social events.

This package of social and teaching activities forms an intense and interesting start for the students at DTU – and is essential in creating the right attitudes to teaching among students and teachers, a thing which will maintain and improve the high levels at DTU.



*Preliminary test loading of our designed and build bridge: It actually works very well. Photo: Egil Borchersen*

## A new Greenlandic industrial PhD programme

The Arctic Technology Centre of DTU Civil Engineering and Greenlandic companies cooperate in the effort to develop new geophysical survey schemes, which will be of benefit for the Greenlandic society.



PhD student Mojmir Choma  
Arctic Technology Centre  
mocho@byg.dtu.dk



PhD student Inooraq Brandt  
Arctic Technology Centre  
inbra@byg.dtu.dk

A new Greenlandic Industrial PhD programme was introduced in 2008. The programme has established a frame for cooperation between Greenlandic companies and academic institutions as the Arctic Technology Centre of the Department of Civil Engineering, ARTEK. As chief executive officer Keld Hornbech Svendsen from Asiaq puts it:

“Asiaq finds that the new Industrial PhD programme provides great possibilities for cooperation with DTU and ARTEK in regards to development of new geophysical survey schemes, which we expect will be of benefit for the Greenlandic society. E.g. in relation to development of new and improved survey methods which in return will provide an enhanced knowledge base for Greenlandic construction design.”

The two first PhD students following the programme have based their research at ARTEK in cooperation with Asiaq – Greenland Survey respectively and the Greenlandic energy company Nukis-siorfiit.

“Integrated Geoscience Study of Extend and Effects of Permafrost Change in Greenland” is carried out by Inooraq Brandt, M.Sc. Civil Eng., in cooperation with Asiaq in Nuuk, Greenland. Inooraq seeks to determine the applicability of geophysical methods to mapping of permafrost and ice content in frozen deposits through field surveys at different localities in Greenland and correlation with geotechnical information. Focus is on the use of Ground Penetrating Radar, seismic measurements, DC resistivity methods, Electro-Magnetic methods and microgravity. Due to anisotropic features in different types of permafrost, the methods are not always conclusive when used individually.

### Climate amelioration

Inooraq will benefit from experiences at relevant research facilities through participation in courses on Svalbard and cooperation with researchers in the Alps and/or Alaska. The results will serve as basis for an evaluation of the effect of climate induced changes in permafrost conditions and the effects on infrastructure and constructions. Development of databases regarding permafrost distribution and physical properties near urban areas in Greenland will contribute to necessary adaptation and mitigation procedures in relation to the ongoing climate amelioration in the Arctic, which typically results in structural damages of buildings and roads due to subsidence in ice rich soils.

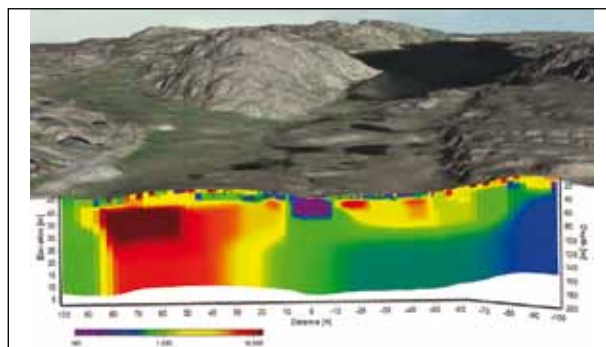


Dam construction at Qorlortorsuaq; power supply for Narsaq and Qaqortoq in South Greenland. Photo: Nukissiorfiit.

“Hydro Power Potentials in Southern Greenland” is carried out by Mojmir Choma, M.Sc. The main focus of the project is to determine areas best suited for efficient production of hydro power energy in Greenlandic towns and small settlements. This is to be done through surface and hydrological modelling based on data measured in relevant areas. Different commercial software programs are to be implemented, e.g. ArcGis and Surfer, for 2D and 3D surface modelling, and Matlab and Python, for hydrological modelling. Measured data include determinations of run-off areas, description of geological conditions, precipitation amounts and other hydrological parameters. The models are to produce an overview of water quantities and stability over time which is to be used in calculations of production potentials.

### Green energy

Arctic areas are important in terms of present and particularly future hydro power potentials. Due to the geology, ice coverage and today's global warming, Greenland has some of the world's best conditions for producing high volumes of green energy. During the project Mojmir is to collaborate with Professor. Eng. Jan Szolgay, PhD from the Department of Land and Water Resources Management at the Slovak Technical University and with the Department of Hydrogeology at Comenius University.



Electrical resistivity profile and digital terrain model of the Thermokarst valley in Sisimiut, West Greenland. Photo: Thomas Ingemann-Nielsen, ARTEK



# CDIO

## - learning by doing

80 students at DTU Civil Engineering built small scale houses in order to demonstrate which factors influenced the energy consumption for heating houses. The course is a part of a new educational concept at the Technical University of Denmark.



*After construction the small houses were placed outside in the cold November weather. Photo: Egil Borchersen*



Associate Professor Egil Borchersen  
Education Manager  
eb@byg.dtu.dk

By the start of the autumn term the new educational concept CDIO was implemented in the programme of Bachelor of Engineering at the Technical University of Denmark, DTU. "Design and build a small scale house and demonstrate which factors that influences on the energy consumption for heating houses" was the task for one of the courses. The 80 students were worried and their teachers a bit in doubt about how to manage this new way of "lecturing a course" but we succeeded and ended up with 21 small houses.

The CDIO concept also consists of a number of other initiatives which have to be implemented in the curriculum. The international CDIO organisation initiated by MIT in Boston and Chalmers in Gothenburg has set up 12 standards to be fulfilled by a CDIO based curriculum. However the DTU central committee for CDIO implementation decided to start with fewer standards. Among these was the demand on setting up learning objectives for all DTU courses and working out learning outcomes in detail on course level. Though most courses previously have formulated objectives we now obtained a more clear and comparable wording. Another task was to introduce a cross disciplinary project on each semester. For those who have been involved in teaching at DTU during the last decades this is not a new wish. May it succeed this time.

### Designing houses on paper

In the curriculum for the Bachelor of Engineering in Civil Engineering the interdisciplinary project this autumn was Energy Consumption in Building and the Build Design course (11701) was combined with the theoretical course Building Energy (11738), in which the thermal design of buildings is handled. I the beginning of the semester the students were forced to make decisions about their design without the necessary theoretical background.

The process was divided in four periods. First one month one day a week for conceiving the assignment and designing the small house on paper. Then the second month for building the house in the new established workshop in Building 117. In the implement phase - the small houses were placed outside in the experimental area. Each house contained an electrical heater with a thermostat securing that the temperature inside was kept in the interval from 18-22 degree Celsius. Furthermore a small data logging device was place inside each house logging the time the heater was active. There were only few sunny hours during the measuring period in November, and the outdoor temperature passed below zero some of the nights so the houses were really tested for their energy saving ability.

### Time for the final report

The last period (the operate phase) was used for handling the data and making the final report. In the meantime the students have learned in the parallel energy course how to theoretically calculate the expected energy consumption. So now the measurements were compared with the expected energy consumption. The huge amount of data was reduced to a few significant numbers and as a whole the measured consumptions showed up to be about 70-90 percent of the theoretical value.

Above the successful part of the new curriculum is described. Of course there are also less successful parts. During the course some students chose to drop out. We did not succeed to find out why. A number of other CDIO initiatives have not yet been implemented in the curriculum because the working group concentrated on getting the first semester ready in time. The first semester students have in the meantime continued to the second semester in which the interdisciplinary project is more a theoretical project.

# Prediction of reinforcement corrosion in concrete structures

A collaborative PhD project takes place between DTU Civil Engineering, Sund & Bælt Holding A/S and Femern Bælt A/S to establish a numerical model for corrosion of reinforcement taking into account cracks and other defects. Such model will both facilitate the assessment of existing structures and support the design of new reinforced concrete structures.



Associate Professor Mette Geiker  
Section for Construction Materials  
mge@byg.dtu.dk



Professor Henrik Stang  
Section for Structural Engineering  
hs@byg.dtu.dk



Associate Professor John Forbes Olesen  
Section for Structural Engineering  
jffo@byg.dtu.dk

Much emphasis is placed on means of ensuring a long service life of reinforced concrete structures, and the possible impact of cracks is an area of major concern. Concrete has a high compressive strength, but a low tensile strength and is therefore reinforced for structural purposes. Typically, black steel is used for reinforcement, and the steel is well protected by the alkaline concrete. However, aggressive ions as chloride from sea water or deicing salt may penetrate - in particular through cracks - and cause premature steel corrosion.

Large sums are used to ensure the durability of concrete structures, especially to protect against reinforcement corrosion. Durability considerations are thus an integrated part of the design, construction, and operation phases of important infrastructure structures such as the Great Belt Link and the planned connection over Femern Belt.

Improved durability leads to increased structural reliability, less maintenance and repair, and overall increased sustainability. Possible solutions improving service life, however, are difficult to evaluate, since current service life models are not based on

detailed descriptions of the corrosion process. Also they do not take into account the presence of cracks and other defects.

## New prediction tool

For a comprehensive evaluation of the service life, models based on physio-chemical concepts are needed. These models should - besides a description of the electro-chemical corrosion process itself - include description of the structural detailing, the materials properties (including defects and cracks) as well as aging and deterioration.

Development of such models is the focus area of an ongoing research project. The models will, among others, support the selection of materials, including possible nanotechnological solutions. The project is undertaken by PhD student Alexander Michel together with supervisors from two sections of the Department of Civil Engineering, namely the Section for Construction Materials and the Section for Structural Engineering, as well as supervisors from the large infrastructure owners Sund & Bælt Holding A/S and Femern Bælt A/S. In addition, the project benefits from, among others, two recent PhD projects undertaken in close collaboration with Professor Per







The Great Belt Link. Photo: Sund & Bælt Holding A/S

Møller, DTU Department of Mechanics. PhD student Andre Küter, now COWI A/S, adapted available thermodynamic principles to the area of reinforcement corrosion and established a thermodynamically consistent description of diverse corrosion states of steel in concrete. Former Industrial PhD student Peter Vagn Nygaard, Force Technology, provides, among others, data on the impact of temperature and relative humidity.

Initially, a two phase model (Figure 1a) will be established based on current literature. This initial model will include transport and selected electrochemical processes to allow simulation of the propagation of macro-cell corrosion in a homogeneous defect-free system. After evaluating the ability of the model to simulate the corrosion process, the model will be extended to include varying surface conditions and cracks. Based on this deterministic multiphase model (Figure 1b) for macro-cell corrosion, a probabilistic service life model for the propagation phase of cracked reinforced concrete will be established.

Fig. 1a: Two phase corrosion system

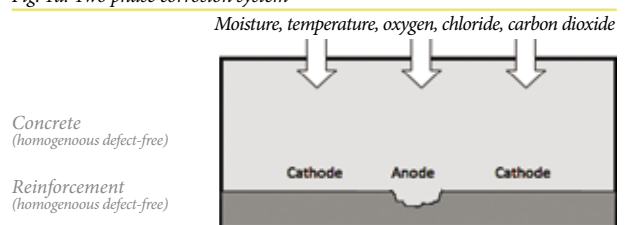


Fig 1b: Multiphase corrosion system

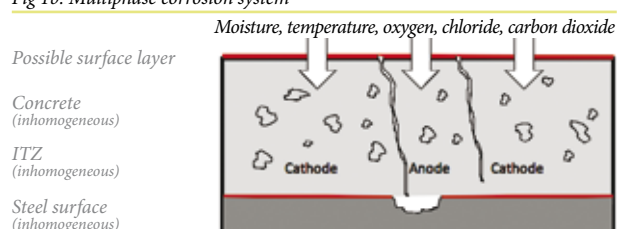


Fig. 1: Concrete-steel systems to be modelled. Illustration: Alexander Michel

# Publications

## Journal papers -ISI-indexed

**Kolarik, Barbara; Naydenov, Kiril Georgiev; Larsson, Martin; Bornehag, Carl-Gustaf; Sundell, Jan**

The association between phthalates in dust and allergic diseases among Bulgarian children. In: *Environmental Health Perspectives*, vol: 116(1), p. 98-103 (2008). Us Dept Health Human Sciences Public Health Science. Type: Journal article

**Naydenov, K.; Melikov, Arsen Krikor; Markov, D.; Stankov, P.; Bornehag, Carl-Gustaf; Sundell, J.**

A comparison between occupants' and inspectors' reports on home dampness and their association with the health of children: The ALL-HOME study. In: *Building and Environment*, vol: 43(11), p. 1840-1849 (2008). Pergamon. Type: Journal article

**Lund-Hansen, Lars Chresten; Nielsen, Morten Holtegaard; Bruhn, Annette; Christiansen, Christian; Vang, Torben; Casado-Amezua, Pilar; Richardson, Katherine; Santaloria, Lucia.**

A consistent high primary production and chlorophyll-a maximum in a narrow strait – effects of hydraulic control. In: *Journal of Marine Systems*, vol: 74(1-2), p. 395-405 (2008). Elsevier . Type: Journal article.

**Täljsten, Björn; Sas, Gabriel; Carolin, Anders.**

A model for predicting shear bearing capacity of FRP strengthened beams. In: *Mechanics of Composite Materials*, vol: 44(3), p. 245-256 (2008). Springer New York LLC . Type: Journal article.

**Johannesson, Björn; Janz, Mårten.**

A two-phase moisture transport model accounting for sorption hysteresis in layered porous building constructions. In: *Building and Environment*, vol: Article in Press (2008). Pergamon . Type: Journal article.

**Krabbenhøft, Kristian; Krabbenhøft, Jørgen.**

Application of the Poisson-Nernst-Planck equations to the migration test. In: *Cement and Concrete Research*, vol: 38(1), p. 77-88 (2008). Pergamon-elsevier Science Ltd . Type: Journal article.

**Jørgensen, Anders Stühr; Doré, Guy; Voyer, Érika; Chataigner, Yohann; Gosselin, Louis.**

Assessment of the effectiveness of two heat removal techniques for permafrost protection. In: *Cold Regions Science and Technology*, vol: 53(2), p. 179-192 (2008). Elsevier Science Publishers BV . Type: Journal article.

**Bhushan, Karihaloo; Stang, Henrik.**

Buckling-driven delamination growth in composite laminates: Guidelines for assessing the threat posed by interlaminar matrix delamination. In: *Composites Part B-engineering*, vol: 39(2), p. 386-395 (2008). Elsevier Sci Ltd . Type: Journal article.

**Fan, Jianhua; Furbo, Simon.**

Buoyancy effects on thermal behavior of a flat-plate solar collector. In: *Journal of Solar Energy Engineering*, vol: 130(2) (2008). ASME International . Type: Journal article.

**Fabricsius, Ida Lykke; Gommessen, Lars; Krogsbøll, Anette Susanne; Olsen, Dan.**

Chalk porosity and sonic velocity versus burial depth : Influence of fluid pressure, hydrocarbons, and mineralogy. In: *AAPG Bulletin*, vol: 92(2), p. 201-223 (2008). American Association of Petroleum Geologists . Type: Journal article.

**Lima, Ana T.; Ottosen, Lisbeth M.; Pedersen, Anne Juul; Ribeiro, Alexandra B.**

Characterization of fly ash from bio and municipal waste. In: *Biomass & Bioenergy*, vol: 32(3), p. 277-282 (2008). Elsevier Science Limited . Type: Journal article.

**Walter, Rasmus; Olesen, John Forbes.**

Cohesive mixed mode fracture modelling and experiments. In: *Engineering Fracture Mechanics*, vol: 75(18), p. 5163-5176 (2008). Elsevier . Type: Journal article.

**Nygaard, Peter Vagn; Geiker, Mette Rica; Elsener, Bernhard.**

Corrosion rate of steel in concrete - Evaluation of confinement techniques for on-site corrosion rate. In: *Materials and Structures*, vol: Article in Press, Available online (2008). Springer . Type: Journal article.

**Bekö, Gabriel; Kolarik, Jakub.**

Declaration of the High Tatras. In: *Indoor Air*, vol: 18(2), p. 75-76 (2008). Blackwell Munksgaard . Type: Editorial Material.

**Fang, Lei; Zhang, G.; Wisthaler, A..**

Desiccant wheels as gas-phase absorption (GPA) air cleaners: evaluation by PTR-MS and sensory assessment. In: *Indoor Air*, vol: 18(5), p. 375-385 (2008). Wiley-Blackwell Publishing, Inc. . Type: Journal article.

**Nielsen, Toke Rammer; Rose, Jørgen; Kragh, Jesper.**

Dynamic model of counter flow air to air heat exchanger for comfort ventilation with condensation and frost formation. In: *Applied Thermal Engineering*, vol: 29(2-3), p. 462-468 (2009). Elsevier BV . Type: Journal article.

**Skocek, Jan; Zeman, Jan.**

Effective properties of textile composites: application of the Mori-Tanaka method. In: *Modelling & Simulation in Materials Science and Engineering*, vol: 16(8) (2008). IOP Publishing (UK) . Type: Journal article.

**Hansen, Henrik K.; Rojo, Adrian; Pino, Denisse; Ottosen, Lisbeth M.; Ribeiro, Alexandra B..**

Electrodialytic remediation of suspended mine tailings. In: *Journal of Environmental Science and Health. Part A: Toxic Hazardous Substances and Environmental Engineering*, vol: 43(8), p. 832-836 (2008). Taylor & Francis . Type: Journal article.

**Lima, Ana Teresa; Ottosen, Lisbeth M.; Ribeiro, Alexandra B.; Hansen, Henrik K..**

Electrodialytic removal of Cd from straw ash in a pilot plant. In: *Journal of Environmental Science and Health. Part A: Toxic Hazardous Substances and Environmental Engineering*, vol: 43(8), p. 844-851 (2008). Taylor & Francis . Type: Journal article.

**Schiavon, S.; Melikov, Arsen Krikor.**

Energy saving and improved comfort by increasing air movement. In: *Energy and Buildings*, vol: 40(10), p. 1954-1960 (2008). Elsevier SA . Type: Journal article.

**Schultz, Jørgen Munthe; Jensen, Karsten Ingerslev.**

Evacuated aerogel glazings. In: *Vacuum*, vol: 82(7), p. 723-729 (2008). Pergamon-elsevier Science Ltd . Type: Journal article.

**Fan, Jianhua; Shah, Louise Jivan; Furbo, Simon.**

Flow distribution in a solar collector panel with horizontally inclined absorber strips. In: *Solar Energy*, vol: 81(12), p. 1501-1511 (2007). Pergamon-elsevier Science Ltd . Type: Journal article.

**Poppendieck, D.G.; Hubbard, H.F.; Weschler, Charles J.; Corsi, R.L..**

Formation and emissions of carbonyls during and following gas-phase ozonation of indoor materials. In: *Atmospheric Environment*, vol: 41(35), p. 7614-7626 (2007). Pergamon-elsevier Science Ltd . Type: Journal article.

**Frandsen, Henrik Lund; Svensson, Staffan.**

Implementation of sorption hysteresis in multi-Fickian moisture transport. In: *Holzforschung*, vol: 61(6), p. 693-701 (2007). Walter de Gruyter GmbH & Co. KG . Type: Journal article.

**Larsson, M.; Hagerhed-Engman, L.; Sigsgaard, T.; Janson, S.; Sundell, Jan; Bornehag, Carl-Gustav.**

Incidence rates of asthma, rhinitis and eczema symptoms and influential factors in young children in Sweden. In: *Acta Paediatrica*, vol: 97(9), p. 1210-1215 (2008). Blackwell Publishing . Type: Journal article.

**Skocek, Jan; Stang, Henrik.**

Inverse analysis of the wedge-splitting test. In: *Engineering Fracture Mechanics*, vol: 75(10), p. 3173-3188 (2008). Pergamon-elsevier Science Ltd . Type: Journal article.

**Mortensen, Lone Hedegaard; Rode, Carsten; Peuhkuri, Ruut.**  
Investigation of airflow patterns in a microclimate by particle image velocimetry (PIV). In: *Building and Environment* , vol: 43(11), p. 1929-1938 (2008). Elsevier . Type: Journal article.

**Andersen, Elsa; Furbo, Simon; Hampel, Matthias; Heidemann, Wolfgang; Müller-Steinhagen, Hans.**  
Investigations on stratification devices for hot water stores. In: *International Journal of Energy Research* , vol: 32(3), p. 255-263 (2008). John Wiley & Sons Limited . Type: Journal article.

**Johannesson, Björn.**  
Ionic Diffusion and Kinetic Homogeneous Chemical Reactions in the Pore Solution of Porous Materials with Moisture Transport. In: *Computers and Geotechnics* , vol: Article in Press, Available online (2008). Pergamon-Elsevier Science Ltd . Type: Journal article.

**Bekö, Gabriel; Clausen, Geo; Weschler, Charles J..**  
Is the use of particle air filtration justified? Costs and benefits of filtration with regard to health effects, building cleaning and occupant productivity. In: *Building and Environment* , vol: 43(10), p. 1647-1657 (2008). Elsevier . Type: Journal article.

**Goltermann, Per.**  
Load-carrying capacity of lightly reinforced, prefabricated walls of lightweight aggregate concrete with open structure. In: *Materials and Structures* , vol: Available Online (2008). Springer . Type: Journal article.

**Lindgreen, Holger; Geiker, Mette Rica; Krøyer, Hanne; Springer, Niels; Skibsted, Jørgen.**  
Microstructure engineering of Portland cement pastes and mortars through addition of ultrafine layer silicates. In: *Cement and Concrete Composites* , vol: 30(8), p. 686-699 (2008). Elsevier BV . Type: Journal article.

**Rode, Carsten; Grau, Karl.**  
Moisture buffering and its consequence in whole building hygrothermal modeling. In: *Journal of Building Physics* , vol: 31(4), p. 333-360 (2008). Sage Publications Ltd . Type: Journal article.

**Peuhkuri, Ruut Hannele; Rode, Carsten; Hansen, Kurt Kielsgaard.**  
Non-isothermal Moisture Transport Through Insulation Materials. In: *Building and Environment* , vol: 43(5), p. 811-822 (2008). Elsevier Science Limited . Type: Journal article.

**Ferreira, Célia Maria Dias; Jensen, Pernille Erland; Ottosen, Lisbeth M.; Ribeiro, Alexandra.**  
Preliminary treatment of MSW fly ash as a way of improving electro-dialytic remediation. In: *Journal of Environmental Science and Health. Part A: Toxic Hazardous Substances and Environmental Engineering* , vol: 43(8), p. 837-843 (2008). Taylor & Francis . Type: Journal article.

**Rose, Jørgen; Nielsen, Toke Rammer; Kragh, Jesper; Svendsen, Svend.**  
Quasi-steady-state model of a counter flow air-to-air heat exchanger with phase change. In: *Applied Energy* , vol: 85(5), p. 312-325 (2008). Elsevier Applied Science . Type: Journal article.

**Olesen, Bjarne W..**  
Radiant Floor Cooling Systems. In: *ASHRAE Journal* (Sep. 2008), p. 16-22 (2008). American Society of Heating, Refrigerating, and Air-Conditioning, Engineers . Type: Journal article.

**Toftum, Jørn; Freund, Sarah; Salthammer, Tunga; Weschler, Charles J..**  
Secondary organic aerosols from ozone-initiated reactions with emissions from wood-based materials and a "green" paint. In: *Atmospheric Environment* , vol: 42(33), p. 7632-7640 (2008). Elsevier BV . Type: Journal article.

**Hviid, Christian Anker; Nielsen, Toke Rammer; Svendsen, Svend.**  
Simple tool to evaluate the impact of daylight on building energy consumption. In: *Solar Energy* , vol: 82(9), p. 787-798 (2008). Elsevier BV . Type: Journal article.

**Täljsten, Björn; Hansen, Christian Skodborg; Schmidt, Jacob Wittrup.**  
Strengthening of old metallic structures in fatigue with prestressed and non-prestressed CFRP laminates. In: *Construction and Building Materials* , vol: Article in Press, Available online (2008). Elsevier Ltd. . Type: Journal article.

**Andersen, Rune Vinther; Toftum, Jørn; Andersen, Klaus Kaae; Olesen, Bjarne W..**  
Survey of occupant behaviour and control of indoor environment in Danish dwellings. In: *Energy and Buildings* , vol: 41(1), p. 11-16 (2009). Elsevier BV . Type: Journal article.

**Naydenov, Kiril Georgiev; Popov, Todor; Mustakov, Tihomir; Melikov, Arsen Krikor; Bornehag, Carl-Gustaf; Sundell, Jan.**  
The association of pet keeping at home with symptoms in airways, nose and skin among Bulgarian children. In: *Pediatric Allergy and Immunology* , vol: 19(8), p. 702-708 (2008). Blackwell Publishing . Type: Journal article.

**Clausen, Geo; Wyon, David Peter.**  
The combined effects of many different indoor environmental factors on acceptability and office work performance. In: *HVAC & R Research*, vol: 14(1), p. 103-113 (2008). Amer Soc Heating Refrigerating Air-conditioning Eng, Inc. . Type: Journal article.

**Kolarik, Barbara; Bornehag, Carl-Gustaf; Naydenov, Kiril Georgiev; Sundell, Jan; Stavova, Petra; Nielsen, Ole Faurskov.**  
The concentrations of phthalates in settled dust in Bulgarian homes in relation to building characteristic and cleaning habits in the family. In: *Atmospheric Environment* , vol: 42(37), p. 8553-8559 (2008). Pergamon-elsevier Science Ltd . Type: Journal article.

**Strøm-Tejse, Peter; Weschler, Charles J.; Wargocki, Pawel; Myskow, Danuta; Zarzycka, Julita.**  
The influence of ozone on self-evaluation of symptoms in a simulated aircraft cabin. In: *Journal of Exposure Science and Environmental Epidemiology* , vol: 18(3), p. 272-281 (2008). Nature Publishing Group . Type: Journal article.

**Zhang, G.; Zhang, Y.F.; Fang, Lei.**  
Theoretical study of simultaneous water and VOCs adsorption and desorption in a silica gel rotor. In: *Indoor Air* , vol: 18(1), p. 37-43 (2008). Blackwell Publishing . Type: Journal article.

**Ottosen, Lisbeth M.; Christensen, Iben Vernegren; Rørig-Dalgaard, Inge; Jensen, Pernille Erland; Hansen, Henrik K..**  
Utilization of electromigration in civil and environmental engineering - Processes, transport rates and matrix changes. In: *Journal of Environmental Science and Health Part A Toxic Hazardous Substances and Environmental Engineering* , vol: 43(8), p. 795-809 (2008). Taylor & Francis . Type: Journal article.





## Journal papers - Peer Reviewed

**Ai, Ning; Fan, Jianhua; Li, Yumin**

CFD Study of Fluid Flow in an All-glass Evacuated Tube Solar Water Heater. In: Journal of Beijing University of Aeronautics and Astronautics, vol: 34(10), p. 1195-1199 (2008). Type: Journal article

**Täljsten, Björn; Kerrouche, Abdelfatthe; Leighton, J; Boyle, W.J.O; Gebremichael, Y.M; Sun, Tong; Grattan, K.T.V; Bennitz, Anders.**

Field tests of Fibre Bragg Grating sensors incorporated into CFRP for Railway Bridge strengthening condition monitoring. In: IEEE Sensors Journal : A Publication of the IEEE sensors council , vol: 8(12), p. 2059-2065 (2008). IEEE . Type: Journal article.

**Naydenov, Kiril Georgiev; Melikov, Arsen Krikor; Clausen, Geo.**

Indoor environmental factors and health effects among children in Bulgaria and Denmark. In: Miljø, og Sundhed : Sundhedsstyrelsens Rådgivende Videnskabelige Udvalg for Miljø og Sundhed , vol: 14(1), p. 21-28 (2008). . Type: Journal article.

**Nielsen, Lauge Fuglsang.**

Moisture Sorption in Porous Materials : a best fit description from experimental data. In: Moisture Sorption in Porous Materials , vol: 1-2 (2007). Nordic Concrete Federation . Type: Journal article.

**Täljsten, Björn; Blanksvärd, Thomas.**

Strengthening of Concrete Structures with cement based bonded composites. In: Nordic Concrete Research , vol: 2(38), p. 133-153 (2008). Nordic Concrete Federation . Type: Journal article.

**Agerskov, Henning.**

The Fatigue Behavior of Steel Structures under Random Loading. In: Key Engineering Materials : Special issue: Advances in Understanding the Fatigue Behavior of Materials , vol: 378-379(Sept.), p. 3-16 (2008). Trans Tech Publications Ltd. . Type: Journal article.

**Woloszyn, Monika; Rode, Carsten.**

Tools for Performance Simulation of Heat, Air and Moisture Conditions of Whole Buildings. In: Building Simulation : An International Journal , vol: 1(1), p. 5-24 (2008). Tsinghua Press and Springer-Verlag . Type: Journal article.

**Løgstrup, Laust; Villumsen, Arne.**

Veiplanlægning i Grønland. In: Dansk Vejtidskrift , vol: 8, p. 16-19 (2008). Dansk vejtidsskrift ApS . Type: Journal article.



**Goltermann, Per; Hansen, Thomas Cornelius.**

DS/EN1520; NA:2008 : Præfabrikerede armerede elementer af letbeton med porøse tilslag og åben struktur iht. EN 1520 . - Dansk Standard : Dansk Standard, 2008 . Type: Book.

**Goltermann, Per; Hansen, Thomas Cornelius.**

DS/INF 168:2008 : Supplerende vejledning ved brug af EN 1520, Præfabrikerede elementer af letbeton med lette tilslag og åben struktur . - Dansk Standard : Dansk Standard, 2008 . Type: Book.

**Hansen, Thomas Conelius; Goltermann, Per.**

DS/INF 169:2008 : Supplerende vejledning ved brug af EN 12602, Præfabrikerede elementer af porebeton . - Dansk Standard : Dansk Standard, 2008 . Type: Book.

**Hansen, Thomas Cornelius; Goltermann, Per.**

FU DS/EN 12602 : Forkortet udgave af norm for konstruktioner af Præfabrikerede armerede elementer af porebeton iht. EN 12602 . - Dansk Standard : Dansk Standard, 2008 . Type: Book.

**Goltermann, Per; Hanen, Thoms Cornelius.**

FU EN/DS 1520 : Forkortet udgave af norm for konstruktioner af Præfabrikerede armerede elementer af letbeton med porøse tilslag og åben struktur iht. EN 1520 . - Dansk Standard : Dansk Standard, 2008 . Type: Book.

**Wargocki, Pawel; Seppanen, O.; Andersson, J.; Boestra, A.; Clements-Croome, D.; Fitzner, K.; Hanssen, S.O..**

Indoor climate and productivity in offices. How to integrate productivity in life cycle costs analysis of building services - SHASE, 2008 . Type: Book.

**Strøm-Tejse, Peter; Olesen, Bjarne W.; Wargocki, Pawel; Zukowska, Daria; Toftum, Jørn.**

Proceedings of Indoor Air 2008, the 11th International Conference on Indoor Air Quality and Climate . - Copenhagen, Denmark : Proceedings on CDROM, 2008 . Type: Book.

**Woloszyn, Monika; Rode, Carsten.**

Whole Building Heat, Air, Moisture Response : Modelling Principles and Common Exercises - International Energy Agency, Executive Committee on Energy Conservation in Buildings and Community Systems, 2008 . Type: Book.

**Jensen, Peter H.; Meyer, Niels I; Mortensen, Niels Gylling; Øster, Flemming.**

Wind Energy Pocket Reference . - China : International Solar Energy Society, 2008 (p. 81). In: Energy Pocket Reference Series ; 2 . Type: Book.

## Books

**Bjerregaard Jensen, Lotte.**

B 150 civil engineering futures : The 150th anniversary celebrations of the study of civil engineering in Denmark . - 1. ed. - Copenhagen : DTU and Realdania, 2008 (p. 144) . Type: Book.

**Wargocki, Pawel; Seppanen, O.; Andersson, J.; Boestra, A.; Clements-Croome, D.; Fitzner, K.; Hanssen, S.O..**

Clima interno e produttività negli uffici. Come integrare la produttività nell'analisi del costo del ciclo di vita degli edifici (Indoor climate and productivity in offices. How to integrate productivity in life cycle costs analysis of building services) - AICARR, 2008 . Type: Book.

**Hansen, Thomas Cornelius; Goltermann, Per.**

DS/EN 12602; NA:2008 : Præfabrikerede armerede elementer af porebeton iht. EN 12602 . Type: Book.

## Book Chapters

**Janssen, Hans.**

Annex 41 - Subtask 2 - Chapter 3 - Buffer potential characterisation. In: Annex 41 whole building heat air and moisture response - Subtask 2: Experimental analysis of moisture buffering , p. 125-146 , 2008 . Type: Book chapter.

**Janssen, Hans.**

Annex 41 - Subtask 4 - Chapter 3.2 - Passive strategies. In: Annex 41 whole building heat air and moisture response - Subtask 4: Applicati-



ons of whole-building HAM analysis , p. 118-122 , 2008 . Type: Book chapter.

**Nørgaard, Jørgen.**

Avoiding Rebound through a Steady-State Economy. In: Energy Efficiency and Sustainable Consumption: The Rebound Effect , p. 204-223 - 1 ed. - Houndmills, Basingstoke, Hampshire, RG21 6XS, England : Palgrave Macmillan Publ., 2008 . Type: Book chapter.

**Geiker, Mette Rica; Nielsen, Anders.**

Beton. In: Materialebogen , p. 536-565 - 1 ed. - Copenhagen : Nyt teknisk Forlag, 2008 . Type: Book chapter.

**Hansen, Kurt Kielsgaard.**

Bjergarter. In: Materialebogen , p. 481-491 - 1. ed. - København : Nyt Teknisk Forlag, 2008 . Type: Book chapter.

**Ekholm, Anders; Vestergaard, Flemming; Buhl, Henrik.**

Byggeklassifikation og anvendelse af 3D-arbejdsmetode i "The Icelandic Concert and Conference Centre" - et dansk/svensk perspektiv. In: Digitalt byggeri og svensk og dansk byggeklassifikation i et Øresundsperspektiv , p. 17 - 32 - 1 ed. - Lund : Lund University, 2008 . Type: Book chapter.

**Vestergaard, Flemming.**

Dansk Byggeklassifikation 2006. In: Digitalt Byggeri og svensk og dansk byggeklassifikation i et Øresundsperspektiv , p. 133 - 153 -Lund : Lund University, 2008 . Type: Book chapter.

**Christensen, Hans Peter.**

De la actividad al aprendizaje activo : From Activity to Active Learning. In: Ciencia e Ingeniería en la Formación de ingenieros para el siglo : Fundamentos, estrategias y casos , p. 87-116 , 2008 . Type: Book chapter.

**Christensen, Hans Peter.**

De las competencias a los objetivos educacionales : From Competences to Learning Objectives. In: Ciencia e Ingeniería en la Formación de ingenieros para el siglo : Fundamentos, estrategias y casos , p. 42-58 , 2008 . Type: Book chapter.

**Olesen, Bjarne W..**

Gefährdet das Raumklima unsere Gesundheit? Neue Erkenntnisse über den Einfluss des Raumklimas auf Gesundheit, Komfort und Leistung. In: Umweltbewusstes Bauen : ELnergieeffizienz - Behaglichkeit - Materialien ; Festschrift zum 60. Geburtstag von Gerd Hauser417 , p. 417-432 . Type: Book chapter.

**Olesen, Bjarne W.; Hellwig, R.T..**

Hygienische Grundlagen. In: Taschenbuch für Heizung + Klimatechnik , p. 88-115 , 2008 . Type: Book chapter.

**Vestergaard, Flemming.**

Implementering af Det Digitale Byggeri's standarder og arbejdsmetoder i Danmark : - et udgangspunkt for et dansk/svensk samarbejde. In: Digitalt byggeri og svensk og dansk byggeklassifikation i et Øresundsperspektiv ; Del 2 , p. 59 - 104 - 1 ed. - Lund : Lund University, 2008 . Type: Book chapter.

**Mez, Lutz; Meyer, Niels I.**

Innovateur in Sachen Windenergie - Dänemark. In: Windenergie in Ländervergleich : Steuerungsimpulse, Akteure und technische Entwicklungen in Deutschland, Dänemark, Spanien und Grossbritannien. , p. 61-80 -Frankfurt : Peter Lang, 2008 . Type: Book chapter.

**Hansen, Kurt Kielsgaard.**

Plast. In: Bygningsingeniørernes materialer - uddrag af Materialebogen , p. 143-165 - 1. ed. - København : Nyt Teknisk Forlag, 2008 . Type: Book chapter.

**Haas, Reinhard; Meyer, Niels I; Held, Anne; Finon, Dominique; Wiser, Ryan; Nishio, Ken-Ishiro.**

Promoting renewable energy: Lessons learned from 20 years of experimentation. In: Competitive Electricity Markets : Design, Implementation, Performance ; Chapter 12 Elsevier Publishers, 2008 . Type: Book chapter.

**Geiker, Mette Rica.**

Self-compacting concrete (SCC). In: Developments in the formulation and reinforcement of concrete , p. 187-207 - 1 ed. - Cambridge, CB21 6AH, UK : Woodhead Publishing, 2008 . Type: Book chapter.

**Geiker, Mette Rica.**

Self-Compacting Concrete, the concrete of the future. In: B150-Civil Engineering Futures : the 150th anniversary celebrations of the study of civil engineering in Denmark , p. 64-67 DTU Civil engineering, Technical University of Denmark, 2008 . Type: Book chapter.

**Jensen, Ole Mejlhede; Nielsen, Anders.**

Strukturudvikling. In: Materialebogen , p. 544-547 - 1 ed. - København : Nyt Teknisk Forlag, 2007 . Type: Book chapter.

**Bache, Anja Margrethe.**

Technology Transfer. In: B150 Civil Engineering Futures : The 150 th Anniversary celebrations of the study of civil engineering in Denmark ; Chapter 3 , p. 76-80 - 1. ed. - Lyngby : DTU, 2008 . Type: Book chapter.

**Olesen, Bjarne W.; Bluysen, Philo; Roulet, Claude-Alain.**

Ventilation and indoor environmental quality. In: Ventilation Systems : Design and Performance -England : The Cromwell Press, 2008 . Type: Book chapter.

**Conference papers  
- Peer Reviewed**

**Ingeman-Nielsen, Thomas; Abdel, Barten.**

ЕСТЕСТВЕННЫЙ ДРЕНАЖ ОЗЕРА У ГОРОДА «КАПГАЛЕССУКАК» В ЗАПАДНО-ЦЕНТРАЛЬНОЙ ЧАСТИ ГРЕНЛАНДИИ . Presented at: Международной научной конференции «Проблемы природопользования и экологическая ситуация в Европейской России и сопредельных странах» . Белгород , 2008. In: III Международной научной конференции; «Проблемы природопользования и экологическая ситуация , p. 68-72 -Белгород : БЕЛГОРОДСКИЙ ГОСУДАРСТВЕННЫЙ УНИВЕРСИТЕТ, 2008 . Type: Conference paper published in book/proceeding.

**Барис, Храмов; Abdel, Barten.**

Инженерно- экологические проблемы недропользования при формировании откосов карьеров и отвалов в регионе КМА . Presented at: Международной научной конференции «Проблемы природопользования и экологическая ситуация в Европейской России и сопредельных странах» . Белгород , 2008. In: III Международной научной конференции «Проблемы природопользования и экологическая ситуация , p. 142-143 -Белгород : БЕЛГОРОДСКИЙ ГОСУДАРСТВЕННЫЙ УНИВЕРСИТЕТ, 2008 . Type: Conference paper published in book/proceeding.

**Hededal, Ole; Strandgaard, Torsten.**

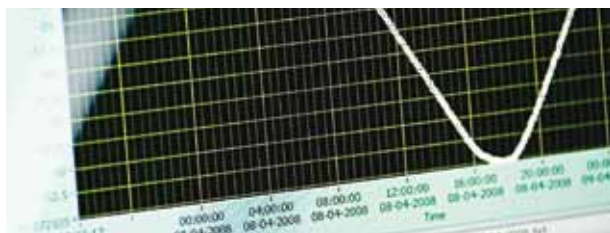
A 3D elasto-plastic soil model for lateral buckling analysis . Presented at: 18. International Offshore and Polar Engineering Conference . Vancouver, Canada , 2008. In: Proceedings of the Eighteenth (2008) International Offshore and Polar Engineering Conference : Pipelines and risers XI ; 2 , p. 261-268 - 1 ed. - Vancouver : The International Society of Offshore and Polar Engineers (ISOPE), 2008 . Type: Conference paper published in book/proceeding.

**Hosokawa, Yoshifumi; Yamada, Kazuo; Johannesson, Björn.**

A development of multi-Species mass transport model considering thermodynamic phase equilibrium . Presented at: CONMOD 08 Concrete modelling . Delft, Netherlands , 2008. In: Concrete Modelling . Type: Conference paper published in book/proceeding.

**Fan, Jianhua; Dragsted, Janne; Furbo, Simon.**

A Long Term Test of Differently Designed Evacuated Tubular Collectors . Presented at: EuroSun 2008 . Lisbon, Portugal , 2008. In: EuroSun 2008 : 1st International Conference on Solar Heating, Cooling and Buildings -Lisbon, Portugal, 2008 . Type: Conference paper published in book/proceeding.



**Christensen, Jørgen Erik.**

A Method for more specific Simulation of Operative Temperature in Thermal Analysis Programmes . Presented at: NSB2008 Nordic Symposium on Building Physics 2008 . Copenhagen, Denmark , 2008. In: NSB2008 Nordic Symposium on Building Physics 2008 : Proceedings of the 8th Symposium on Building Physics in the Nordic Countries ; 2 , p. 551-558 - 1 ed. - Copenhagen, Denmark : Danish Society of Engineers, IDA, 2008 . Type: Conference paper published in book/proceeding.

**Laustsen, Sara; Hasholt, Marianne Tange; Jensen, Ole Mejlhede.**

A new technology for air-entrainment of concrete . Presented at: Microstructure related durability of cementitious composites . Nanjing, China , 2008. In: Microstructure related durability of cementitious composites ; 2 , p. 1223-1230 -Bagneux, France : RILEM publications S.A.R.L., 208 . Type: Conference paper published in book/proceeding.

**Ingólfsson, Einar Thór; Georgakis, Christos; Knudsen, Anders.**

A preliminary experimental investigation into lateral pedestrian-structure interaction . Presented at: EURODYN 2008 . Southampton, UK , 2008. In: EURODYN 2008 : Proceedings of the seventh European conference on structural dynamics , 2008 . Type: Conference paper published in book/proceeding.

**Roels, Staf; Janssen, Hans.**

A simple model for a reliable prediction of moisture storage within building energy simulation tools . Presented at: Nordic Symposium on Building Physics 2008 , 2008. In: Proceedings of the "8th Symposium on Building Physics in the Nordic Countries" , 2008 . Type: Conference paper published in book/proceeding.

**Wan, M.P.; Chao, C.Y.H.; Sze To, G.N.; Fang, Lei; Melikov, Arsen Krikor.**

An Experimental Study on the Fate of Expiratory Droplets in Aircraft Cabin . Presented at: International conference on Indoor Air Quality and Climate - Indoor Air 2008 . Copenhagen, Denmark , 2008. In: 11th International conference on Indoor Air Quality and Climate - Indoor Air 2008 ; Paper 161 . Type: Conference paper published in book/proceeding.

**Arifovic, Fedja.**

Anchorage failure of RC beams strengthened with FRP at the bottom face . Presented at: 2nd international conference on concrete repair, rehabilitation and retrofitting . Cape Town, South Africa , 2008. In: 2nd international conference on concrete repair, rehabilitation and retrofitting -Cape Town, South Afrika, 2008 . Type: Conference paper published in book/proceeding.

**Lárusson, Lárus Helgi; Fischer, Gregor; Jönsson, Jeppe.**

Application of Engineered Cementitious Composites (ECC) in modular floor panels . Presented at: This paper describes the design, manufacturing, and structural behavior of a prefabricated floor panel consisting of a modular assembly of a thin-walled ECC slab and steel truss girders. The features of this composite structure include light weight, the modular manufacturing process with adaptability to various loading requirements, and the efficient utilization of material resources and industrial byproducts. . Chennai (Madras), India , 2008. In: BEFIB 2008: 7th RILEM International Symposium on Fibre Reinforced Concrete . Type: Conference paper published in book/proceeding.

**Olesen, Bjarne W..**

Applications of radiant floor cooling systems . Presented at: Advanced building ventilation and environmental technology for addressing climate change issues . Kyoto, JAPAN , 2008. In: Advanced building ventilation and environmental technology for addressing climate change issues . Type: Conference paper published in book/proceeding.

**Olesen, Bjarne W..**

Applications of radiant floor cooling systems . Presented at: 63°

Congresso Nazionale ATI . Palermo, Italy , 2008. In: 63° Congresso Nazionale ATI ; 02.14 . Type: Conference paper published in book/proceeding.

**Kaczmarczyk, J.; Melikov, Arsen Krikor; Sliva, D..**

Avoiding draught discomfort with personalized ventilation used at the low range of comfortable room air temperature . Presented at: Indoor Air 2008 . Copenhagen, Denmark , 2008. In: Indoor Air 2008 , 2008 . Type: Conference paper published in book/proceeding.

**Naydenov, K.; Markov, D.; Melikov, Arsen Krikor; Bornehag, C.-G.; Sundell, J..**

Carbon dioxide concentration measured in homes in Bulgaria included in the ALLHOME-2 study . Presented at: International conference on Indoor Air Quality and Climate - Indoor Air 2008 . Copenhagen, Denmark , 2008. In: 11th International conference on Indoor Air Quality and Climate - Indoor Air 2008 ; paper 932 . Type: Conference paper published in book/proceeding.

**Toftum, Jørn.**

Central automatic control or distributed occupant control for better indoor environment quality in the future . Presented at: International Symposium on the Interaction between human and Building Environment . Seoul, Korea , 2008. In: Proc. of International Symposium on the Interaction between human and Building Environment , p. 72-88 -Yonsei University, Seoul, Korea : Human and Building Environment Laboratory, Yonsei University, 2008 . Type: Conference paper published in book/proceeding.

**Leth, Caspar Thrane; Krogsbøll, Anette Susanne; Hededal, Ole.**

Centrifuge facilities at Technical University of Denmark . Presented at: Nordisk Geoteknikermøte nr 15 . Sandefjord, Norway , 2008. In: Proceedings Nordisk Geoteknikermøte nr. 15 , p. 335-342 . Type: Conference paper published in book/proceeding.

**Täljsten, Björn; Blanksvård, Thomas.**

CFRP and mineral based bonding agents to strengthen concrete structures . Presented at: Proceeding of the 20th Symposium on Nordic Concrete Research and Development . Bålsta, Sweden, 8-11 June 2008 , 2008. In: Proceeding of the 20th Symposium on Nordic Concrete Research and Development : NCR 08 . Type: Conference paper published in book/proceeding.

**Santos, Inês; Laustsen, Jacob Birk; Svendsen, Svend.**

Characterization and performance evaluation of solar shading devices . Presented at: Nordic Symposium on Building Physics 2008 , 2008. In: Proceedings of the 8th Symposium on Building Physics in the Nordic Countries ; 1 , p. 103-110 . Type: Conference paper published in book/proceeding.

**Goltermann, Per.**

Chloride ingress: Modelling, sampling and predicting service life". In: Proc. ConMod08, Delft, The Netherlands, 2008 (2008). . Type: Conference paper published in journal.

**Mortensen, Dorthe Kragtig; Nielsen, Toke Rammer; Topp, Claus.**

Comparison of a Constant Air Volume (CAV) and a Demand Controlled Ventilation (DCV) System in a Residential Building . Presented at: Nordic Symposium on Building Physics 2008 . Copenhagen , 2008. In: Proceedings of the 8th Symposium on Building Physics in the Nordic Countries ; 1 , p. 191-197 , 2008 . Type: Conference paper published in book/proceeding.

**Mortensen, Dorthe Kragtig; Nielsen, Toke Rammer; Topp, Claus.**

Comparison of a constant air volume system and a demand controlled ventilation system in a residential building . Presented at: The 11th International Conference on Indoor Air Quality and Climate , 2008. In: Indoor Air 2008 Conference Proceedings , 2008 . Type: Conference paper published in book/proceeding.

**Paulsen, Otto; Fan, Jianhua; Furbo, Simon; Thorsen, Jan Eric.**

Consumer Unit for Low Energy District Heating Net . Presented at: The 11th International Symposium on District Heating and Cooling . Reykjavik, ICELAND , 2008. In: The 11th International Symposium on District Heating and Cooling -Reykjavik, ICELAND, 2008 . Type: Conference paper published in book/proceeding.

**Yang, B.; Sekhar, C.; Melikov, Arsen Krikor.**

Cooling effect of ceiling mounted personalized ventilation system . Presented at: International conference on Indoor Air Quality and Climate - Indoor Air 2008 . Copenhagen, Denmark , 2008. In: 11th



International conference on Indoor Air Quality and Climate - Indoor Air 2008 ; Paper 852 . Type: Conference paper published in book/proceeding.

**Mortensen, Dorthe Kragtig; Nielsen, Toke Rammer; Topp, Claus.**  
Demand controlled ventilation in a bathroom . Presented at: The 29th AIVC conference in 2008 . Japan , 2008. In: Proceedings of the 29th AIVC conference in 2008 : Advanced building ventilation and environmental technology for addressing climate change issues ; 2 , p. 237-242 , 2008 . Type: Conference paper published in book/proceeding.

**Horn, W.; Jann, O.; Juritsch, E.; Ramalho, O.; Wargocki, Pawel; Knudsen, H.N.; Müller, B..**  
Detecting odorous compounds emitted from building and consumer products within the European Project SysPAQ . Presented at: Indoor Air 2008 , , Copenhagen, Denmark , 2008. In: Indoor Air 2008, the 11th International Conference on Indoor Air Quality and Climate : In Strøm-Tejsten, P. Olesen, BW, Wargocki, P, Zukowska, D, Toftum, J, (eds) Proceedings ; paper ID 230 (on CD-ROM) . Type: Conference paper published in book/proceeding.

**Alm, D.; Brix, S.; Kjærgaard, H. Howe; Hansen, Kurt Kielsgaard; Grelk, B..**  
Determination of resistance to salt crystallization on natural stone measured with ultrasonic wave . Presented at: Salt Weathering on Buildings and Stone Sculptures . The National Museum of Denmark, Copenhagen, Denmark , 2008. In: Salt Weathering on Buildings and Stone Sculptures , p. 159-167 -Kgs. Lyngby, Denmark : Technical University of Denmark, Dept. of Civil Engineering, Brovej, Building 118, DK-2800 Kgs. Lyngby, Denmark, 2008 . Type: Conference paper published in book/proceeding.

**Täljsten, Björn; Orosz, Katalin.**  
Development of a new test method for Mineral Based Composites : Wedge splitting test . Presented at: Development of a new test method for Mineral Based Composites . South Africa , 2008. In: 2nd International Conference on Concrete Repair, Rehabilitation and Retrofitting (ICRRR2008) -South Africa : CRC Press, 2008 . Type: Conference paper published in book/proceeding.

**Halvonova, B.; Melikov, Arsen Krikor.**  
Displacement ventilation in conjunction with personalized ventilation . Presented at: International conference on Indoor Air Quality and Climate - Indoor Air 2008 . Copenhagen, Denmark , 2008. In: 11th International conference on Indoor Air Quality and Climate - Indoor Air 2008 ; Paper 411 . Type: Conference paper published in book/proceeding.

**Sun, W.; Melikov, Arsen Krikor; Cheong, D..**  
Distribution of contaminants in the occupied zone of a room served by a novel enhanced displacement ventilation system . Presented at: International Conference AIVC . Kyoto, Japan , 2008. In: 29th International Conference AIVC2008 . Type: Conference paper published in book/proceeding.

**Scheffler, Gregor Albrecht; Plagge, Rudolf.**  
Dynamic effects in the water content – water potential relation . Presented at: Building Physics Symposium . Leuven, Belgium , 2008. In: Proceedings of the Building Physics Symposium : in honour of Prof. Hugo L.S.C. Hens , p. 121-124 -Leuven, Belgium : KU Leuven, Laboratorium Bouwfysica, 2008 . Type: Conference paper published in book/proceeding.

**Ottosen, Lisbeth M.; Rørig-Dalgaard, Inge; Villumsen, Arne.**  
Electrochemical removal of salts from masonry - Experiences from pilot scale . Presented at: Salt Weathering on Buildings and Stone Sculptures . Copenhagen , 2008. In: Salt Weathering on Buildings and Stone Sculptures : Proceedings from the international conference , p. 341-250 DTU Byg, 2008 . Type: Conference paper published in book/proceeding.

**Schiavon, S.; Melikov, Arsen Krikor.**  
Energy analysis of a personalized ventilation system in a cold climate: influence of the supplied air temperature . Presented at: International Conference AIVC . Kyoto, Japan , 2008. In: 29th International Conference AIVC 2008 : Advanced building ventilation and environmental technology for addressing climate change issues . Type: Conference paper published in book/proceeding.

**Kragh, Jesper; Laustsen, Jacob Birck; Svendsen, Svend.**  
Energy Gaining Windows for Residential Buildings . Presented at: Nordic Symposium on Building Physics 2008 . IDA, Copenhagen,

Denmark , 2008. In: Proceedings of the 8th Symposium on Building Physics in the Nordic Countries : Copenhagen, June 16-18, 2008 - 1 ed. - Copenhagen : Department of Civil Engineering, Technical University of Denmark, 2008 . Type: Conference paper published in book/proceeding.

**Furbo, Simon; Thür, Alexander.**  
Energy savings for a solar combi system . Presented at: EuroSun 2008 Congress . Lisbon, Portugal , 2008. In: EuroSun 2008 Proceedings . Type: Conference paper published in book/proceeding.

**Nielsen, Toke Rammer; Kragh, Jesper; Svendsen, Svend.**  
Evaluation of a dynamic model for a cold climate counter flow air to air heat exchanger . Presented at: Evaluation of a dynamic model for a cold climate counter flow air to air heat exchanger . Copenhagen, Denmark , 2008. In: Proceedings of the 8th Symposium on Building Physics in the Nordic Countries ; 2 , p. 511-518 -Kgs. Lyngby, Denmark : Dept. of Civil Engineering, Technical University of Denmark, 2008 . Type: Conference paper published in book/proceeding.

**Scheffler, Gregor Albrecht; Plagge, Rudolf.**  
Evidence on dynamic effects in the water content – water potential relation of building materials . Presented at: 8th Symposium on Building Physics in Nordic Countries . Copenhagen , 2008. In: Proceedings of the 8th Symposium on Building Physics in Nordic Countries ; Volume 2 , p. 881-888 Technical University of Denmark, 2008 . Type: Conference paper published in book/proceeding.

**Zhu, S.; Bolashikov, Zhecho Dimitrov; Melikov, Arsen Krikor.**  
Examination of performance of headset incorporated personalized ventilation unit using CFD method . Presented at: International conference on Indoor Air Quality and Climate - Indoor Air 2008 . Copenhagen, Denmark , 2008. In: 11th International conference on Indoor Air Quality and Climate - Indoor Air 2008 ; Paper 1018 . Type: Conference paper published in book/proceeding.

**Nielsen, Jens Henrik; Olesen, John Forbes; Stang, Henrik.**  
Experimental Investigation of Residual Stresses in Toughened Glass . Presented at: Challenging Glass , 2008. In: Challenging Glass , p. 387-398 IOS Press, 2008 . Type: Conference paper published in book/proceeding.

**Furbo, Simon; Fan, Jianhua.**  
Experimental investigations on small low flow SDHW systems with different solar pumps . Presented at: EuroSun 2008 Congress . Lisbon, Portugal , 2008. In: EuroSun 2008 proceedings . Type: Conference paper published in book/proceeding.

**Stang, Henrik; Fredslund-Hansen, Helge; Puclin, Tony; Harrington, Bede.**  
Extrusion of ECC: Recent Developments and Applications . Presented at: 7th International RILEM Symposium on Fibre Reinforced Concrete . Chennai, India , 2008. In: Fibre Reinforced Concrete: Design and Applications : Proceedings of the Seventh RILEM International Symposium (BEFIB 2008) , p. 461-470 -France : RILEM Publications S.A.R.L., 2008 . Type: Conference paper published in book/proceeding.

**Almegaard, Henrik.**  
Faceting of curved surfaces using the curvature coordinate system . Presented at: IASS Symposium 2008 . Acapulco, Mexico , 2008. In: Proceedings of the IASS-SLTE 2008 Symposium IASS, 2008 . Type: Conference paper published in book/proceeding.

**Täljsten, Björn; Kerrouche, Abdelfathe; Boyle, W.J.O; Alwis, L; Grattan, K.T.V; Bennitz, Anders.**  
Field test – strengthening and monitoring of the Frövi bridge . Presented at: IABMAS 08 . Seoul, South Korea, July 13-16, 2008 , 2008. In: The forth international conference on bridge maintenance, safety and management : IABMAS 08 . Type: Conference paper published in book/proceeding.





**Täljsten, Björn; Sas, Gabriel; Carolin, Anders; Demeter, Istávan; Nagy-György, Tamás; Stoian, Valeriu.**

FRP Strengthening of RC panels with cut-out openings . Presented at: Int. Conference CCC2008-Challenges for Civil Construction , 2008. In: Int. Conference CCC2008-Challenges for Civil Construction , p. 245 . Type: Conference paper published in book/proceeding.

**Schmidt, Jacob Wittrup; Täljsten, Björn; Bennitz, Anders; Henning, Pedersen.**

FRP tendon anchorage in post-tensioned concrete structures . Presented at: International Conference on concrete repair, Rehabilitation and Retrofitting . South Africa , 2008. In: Concrete Repair, Rehabilitation and Retrofitting II , p. 419-420 - II ed. - South Africa : CRC Press/Balkema, 2008 . Type: Conference paper published in book/proceeding.

**Ingeman-Nielsen, Thomas; Foged, Niels Nielsen; Butzbach, Rune; Jørgensen, Anders Stuhr.**

Geophysical Investigations of Saline Permafrost at Ilulissat, Greenland . Presented at: Ninth International Conference on Permafrost . Fairbanks, Alaska , 2008. In: Ninth International Conference on Permafrost ; 1 , p. 773-778 -Fairbanks : Institute of Northern Engineering, University of Alaska Fairbanks, 2008 . Type: Conference paper published in book/proceeding.

**Furbo, Simon; Andersen, Elsa.**

Heat storage for solar heating systems - now and in the future . Presented at: Conference on Thermal Storage . Prague, Czech Republic , 2008. In: Proceedings of Conference on Thermal Storage, Prague, Czech Republic (2008) . . Type: Conference paper published in journal.

**Täljsten, Björn; Arifovic, Fedja; Sas, Gabriel; Barros, Joaquim; Lima, J; Carolin, Anders.**

How reliable are the available models for predicting the FRP contribution for the shear resistance of RC beams? . Presented at: Challenges for Civil Construction . Porto, 16-18 April, 2008 , 2008. In: Int. Conference CCC2008-Challenges for Civil Construction , p. 247 -Porto, 2008 . Type: Conference paper published in book/proceeding.

**Maia, Lino; Geiker, Mette Rica; Figueiras, Joaquim A..**

Hydration of Portuguese cements, measurement and modelling of chemical shrinkage . Presented at: Challenges for Civil Engineers . Porto, Portugal , 2008. In: CCC 2008 : Challenges for Civil Engineers - 1 ed. - Porto : FEUP, 2008 . Type: Conference paper published in book/proceeding.

**Eriksen, Marlene Stenberg Hagen; Laursen, Theresa Back; Rode, Carsten; Hansen, Kurt Kielsgaard.**

Hygrothermal Properties and Performance of Sea Grass Insulation . Presented at: 8th Symposium on Building Physics in the Nordic Countries . Copenhagen , 2008. In: Proceedings of the 8th Symposium on Building Physics in the Nordic Countries , p. 481-488 / Corresponding author: Rode, Carsten -Kgs. Lyngby, Denmark : Dept. of Civil Engineering, Technical University of Denmark, 2008 . Type: Conference paper published in book/proceeding.

**Melikov, Arsen Krikor; Kaczmarczyk, J.; Sliva, D..**

Impact of air movement on perceived air quality at different level of relative humidity . Presented at: International conference on Indoor Air Quality and Climate - Indoor Air 2008. Copenhagen, Denmark , 2008. In: 11th International conference on Indoor Air Quality and Climate - Indoor Air 2008 ; Paper 1037. Type: Conference paper published in book/proceeding.

**Melikov, Arsen Krikor; Kaczmarczyk, J..**

Impact of air movement on perceived air quality at different level of air pollution and temperature . Presented at: 11th International conference on Indoor Air Quality and Climate - Indoor Air 2008. Copenhagen, Denmark , 2008. In: 11th International conference on Indoor Air Quality and Climate - Indoor Air 2008 ; Paper 1033 , 2008 . Type: Conference paper published in book/proceeding.

**Sun, W.; Cheong, D.; Melikov, Arsen Krikor.**

Impact of Different Types of Fans in a Novel Enhanced Displacement Ventilation System on Vertical Temperature Profile and Air Distribution in a Field Environment Chamber. Presented at: International Conference on Building Energy and Environment. Dalian, China, 2008. In: International Conference on Building Energy and Environment, 2008 . Type: Conference paper published in book/proceeding.

**Lone Hedegaard, Mortensen; Rode, Carsten; Peuhkuri, Ruut.**

Impact of furnishing on room airflow . Presented at: 8th Symposium on Building Physics in the Nordic Countries . Copenhagen , 2008. In: Proceedings of the 8th Symposium on Building Physics in the Nordic Countries ; Volume 1 , p. 323-330 / Editor: Rode, Carsten -Kgs. Lyngby, Denmark : Dept. of Civil Engineering, Technical University of Denmark, 2008. Type: Conference paper published in book/proceeding.

**Zukowska, Daria; Melikov, Arsen Krikor; Popiolek, Zbigniew.**

Impact of Thermal Plumes Generated by Occupant Simulators with Different Complexity of Body Geometry on Airflow Pattern in Rooms . Presented at: The 7th International Thermal Manikin and Modelling Meeting - 7I3M . Coimbra, Portugal , 2008. In: Proceedings of the 7th International Thermal Manikin and Modelling Meeting - 7I3M , p. Paper 8 -Coimbra, Portugal, 2008 . Type: Conference paper published in book/proceeding.

**Popiolek, Z.; Melikov, Arsen Krikor.**

Improvement of CFD predictions of air speed turbulence intensity and draught discomfort . Presented at: International conference on Indoor Air Quality and Climate - Indoor Air 2008 . Copenhagen, Denmark , 2008. In: 11th International conference on Indoor Air Quality and Climate - Indoor Air 2008 ; paper 718 . Type: Conference paper published in book/proceeding.

**Wargocki, Pawel.**

Improving indoor air quality improves the performance of officework and school work . Presented at: International Conference for Enhanced Building Operation . Berlin, Germany , 2008. In: ICEBO, the 8th International Conference for Enhanced Building Operation ; on CD-ROM . Type: Conference paper published in book/proceeding.

**Wargocki, Pawel.**

Improving indoor air quality improves the performance of officework and school work . Presented at: International Conference for Enhanced Building Operation . Berlin, Germany , 2008. In: ICEBO, the 8th International Conference for Enhanced Building Operation , , p. on CD-ROM . Type: Conference paper published in book/proceeding.

**Solgaard, Anders Ole Stubbe; Stang, Henrik; Goltermann, Per.**

In-plane shear test of fibre reinforced concrete panels . Presented at: BEFIB 7th RILEM Symposium on Fibre Reinforced Concrete: Design and Applications, Madras, India, 2008 . Madras, India , 2008. In: Proc. BEFIB 7th RILEM Symposium on Fibre Reinforced Concrete: Design and Applications, Madras, India, 2008 . Type: Conference paper published in book/proceeding.

**Mortensen, Lone Hedegaard; Rode, Carsten; Peuhkuri, Ruut.**

Influence of furnishing on indoor airflow near external walls . Presented at: Indoor Air 2008 . Copenhagen , 2008. In: Indoor Air 2008 : Proceedings of the 11th International Conference on Indoor Air Quality and Climate -Copenhagen, Denmark, 2008 . Type: Conference paper published in book/proceeding.

**Steskens, Paul Wilhelmus Maria Hermanus; Rode, Carsten; Janssen, Hans.**

Influences of the Indoor Environment on Heat, Air and Moisture Conditions in The Building Component: Boundary Conditions Modeling . Presented at: 11. International Conference on Durability of Building Materials and Components . Istanbul, Turkey , 2008. In: Durability of Building Materials and Components : Globality and Locality in Durability ; 3 , p. 1433-1440 - 1 ed. - Istanbul : Istanbul Technical University, 2008 . Type: Conference paper published in book/proceeding.

**Steskens, Paul Wilhelmus Maria Hermanus; Rode, Carsten; Janssen, Hans.**

Influences of the Indoor Environment on Heat, Air, and Moisture Conditions in the Component : Boundary conditions modeling . Presented at: Nordic Symposium on Building Physics 2008 . Copenhagen , 2008. In: Proceedings of the 8th Symposium on Building Physics in the Nordic Countries ; 2 , p. 653-660 -Copenhagen : Danish Society of Engineers, IDA, 2008 . Type: Conference paper published in book/proceeding.



**Täljsten, Björn; Bennitz, Anders.**

Innovative Strengthening of Swedish Concrete Trough Bridges . Presented at: Proceeding of the 20th Symposium on Nordic Concrete Research and Development . Bålsta, Sweden, 8-11 June 2008 , 2008. In: Proceeding of the 20th Symposium on Nordic Concrete Research and Development . Type: Conference paper published in book/proceeding.

**Täljsten, Björn.**

Innovative Strengthening Systems for Concrete Structures . Presented at: Symposium on Nordic Concrete Research and Development . Bålsta, Sweden 8-11 June 2008 , 2008. In: Symposium on Nordic Concrete Research and Development : NCR , 2008 . Type: Conference paper published in book/proceeding.

**Vladyková, Petra; Rode, Carsten; Nielsen, Toke Rammer; Peder-sen, Søren.**

Integrated design and Passive Houses for Arctic Climates . Presented at: Symposium on Building Physics in the Nordic Countries , 2008. In: Symposium on Building Physics in the Nordic Countries , 2008 . Type: Conference paper published in book/proceeding.

**Olesen, Bjarne W..**

International standards related to the influence of the indoor environment on peoples health, comfort and productivity . Presented at: International Conference on Energy Research & Development , 2008. In: 4th International Conference on Energy Research & Development . Type: Conference paper published in book/proceeding.

**Dragsted, Janne; Furbo, Simon; Andersen, Elsa.**

Investigation of solar radiation models for high northern latitudes . Presented at: Bæredygtig energiforsyning i Arktis . Sisimiut, Greenland , 2008. In: Bæredygtig energiforsyning i Arktis : sol, vind, vand mm. . Type: Conference paper published in book/proceeding.

**Goltermann, Per.**

Load-carrying capacity of lightly reinforced lightweight aggregate concrete walls . Presented at: Nordic Concrete Research Symposium, Sweden, 2008. In: Proc. Nordic Concrete Research Symposium, Sweden, 2008 . Type: Conference paper published in book/proceeding.

**Sun, W.; Cheong, D.; Melikov, Arsen Krikor.**

Local Climate and Heat Loss from Human Body with a Novel Enhanced Displacement Ventilation System . Presented at: International conference on Indoor Air Quality and Climate - Indoor Air 2008 . Copenhagen, Denmark , 2008. In: 11th International conference on Indoor Air Quality and Climate - Indoor Air 2008 ; paper 962 , 2008 . Type: Conference paper published in book/proceeding.

**Furbo, Simon; Schultz, Jørgen Munthe.**

Long-term investigation of the advantages of anti reflection treated glass covers exposed to real climatic conditions . Presented at: EuroSun 2008 . Lisbon, Portugal , 2008. In: EuroSun 2008 Proceedings . Type: Conference paper published in book/proceeding.

**Andersen, Elsa; Furbo, Simon.**

Long time durability tests of fabric inlet stratification pipes . Presented at: EUROSUN 2008, European Solar Energy Conference . Lisbon - Portugal, 7th to 10th October , 2008. In: EUROSUN 2008, European Solar Energy Conference : 1st International Conference on Solar Heating, Cooling and Buildings ; Electronic proceedings . Type: Conference paper published in book/proceeding.

**Rose, Jørgen; Kragh, Jesper; Svendsen, Svend.**

Low energy class 1 typehouses according to the Danish building regulations . Presented at: Nordic Symposium on Building Physics 2008 . Copenhagen , 2008. In: Proceedings of the 8th Symposium on Building Physics in the Nordic Countries : Copenhagen, June 16-18, 2008 ; Volume 3 , p. 1071-1078 - 1 ed. - Copenhagen : Department of Civil Engineering, Technical University of Denmark, 2008 . Type: Conference paper published in book/proceeding.

**Müller, B.; Dahms, A.; Bitter, F.; Wargocki, Pawel; Olesen, Bjarne W.; Knudsen, H.N.; Afshari, A.; Jann, O.; Horn, W.; Müller, D.; Airak-sinen, M.; Järnström, H.; Tirkkonen, T.; Witterseh, T..**

Material labelling: Combined material emission tests and sensory evaluations . Presented at: Indoor Air 2008 . Copenhagen, Denmark , 2008. In: Indoor Air 2008, the 11th International Conference on Indoor Air Quality and Climate : In Strøm-Tejsen, P. Olesen, BW, Wargocki, P. Zukowska, D. Toftum, J. (eds) Proceedings ; paper ID 1066 (on CD-ROM) . Type: Conference paper published in book/proceeding.

**Tommerup, Henrik M..**

Measurement results and experiences from an energy renovation of a typical Danish single-family house . Presented at: Nordic Symposium on Building Physics 2008 . Copenhagen, Denmark , 2008. In: Proceedings of the 8th Symposium on Building Physics in the Nordic Countries ; 3 , p. 1111-1118 -Copenhagen, Denmark : Danish Society of Engineers, IDA, 2008 . Type: Conference paper published in book/proceeding.

**Thür, Alexander; Furbo, Simon.**

Measurements on a new developed compact solar combisystem in practice . Presented at: EuroSun 2008 . Lisbon, Portugal , 2008. In: EuroSun 2008 Proceedings ; USB stick , 2008 . Type: Conference paper published in book/proceeding.

**Tian, Qian; Jensen, Ole Mejlhede.**

Measuring autogenous strain of concrete with corrugated moulds . Presented at: Microstructure related durability of cementitious composites . Nanjing, China , 2008. In: Microstructure related durability of cementitious composites ; 2 , p. 1501-1511 -Bagneux, France : RILEM publications S.A.R.L., 2008 . Type: Conference paper published in book/proceeding.

**Müller, B.; Dahms, A.; Knudsen, H.N.; Afshari, A.; Wargocki, Pawel; Olesen, Bjarne W.; Berglund, B.; Ramalho, O.; Goschnick, J.; Häringer, D.; Jann, O.; Horn, W.; Nesa, D.; Chanie, E.; Ruponen, M.; Müller, D..**

Measuring perceived air quality and intensity by a Sensor System, the European Project SysPAQ . Presented at: Indoor Air 2008 . Copenhagen, Denmark , 2008. In: Indoor Air 2008, the 11th International Conference on Indoor Air Quality and Climate : In Strøm-Tejsen, P. Olesen, BW, Wargocki, P. Zukowska, D. Toftum, J. (eds) Proceedings ; paper ID 530 (on CD-ROM) . Type: Conference paper published in book/proceeding.

**Svensson, Staffan; Frandsen, Henrik Lund.**

Mechanical modeling of wood and wood based material : IACM-IU-TAM Minisymposium . Presented at: Numerical modeling of moisture transport in wood . Venice, Italy , 2008. In: 8th world congress on computational mechanics WCCM8 : 5th european congress on computational methods in applied sciences and engineering - Venice, Italy, 2008 . Type: Conference paper published in book/proceeding.

**Petersen, Steffen.**

Method for including detailed evaluation of daylight levels in Be06 . Presented at: 8th symposium on building physics in the nordic countries . Copenhagen , 2008. In: Method for including detailed evaluation of daylight levels in Be06 ; Volume 3 - 1 ed. - Copenhagen : Danish Society of Engineers, 2008 . Type: Conference paper published in book/proceeding.

**Petersen, Steffen.**

Method for integrated design of low energy buildings with high quality indoor environment . Presented at: 8th symposium on building physics in nordic countries . Copenhagen , 2008. In: Proceedings of the 8th symposium of building physics in the nordic countries ; Volume 2 , p. 597-604 - 1 ed. - Copenhagen : Danish Society of Engineers, 2008 . Type: Conference paper published in book/proceeding.

**Meyer, Niels I.**

Mitigation of Global Warming with Focus on Personal Carbon Allowances . Presented at: Energy Reform Group Meeting . Salzburg, Austria , 2008. In: on the internet: [www.fu-berlin.de/ffu/](http://www.fu-berlin.de/ffu/) . Type: Conference paper published in book/proceeding.

**Johannesson, Björn; Ottosen, Lisbeth M..**

Modeling of electromigration salt removal methods in building materials . Presented at: Modeling of electromigration salt removal methods in building materials , 2008. In: Salt Weathering on Building and Stone Sculptures , p. 351-360 . Type: Conference paper published in book/proceeding.





**Mougaard, Jens Falkenskov.**

Modelling of Interacting Cracks in Reinforced Concrete . Presented at: 7th fib Ph.D. Symposium in Civil Engineering in Stuttgart , 2008 . In: 7th fib Ph.D. Symposium in Civil Engineering in Stuttgart , 2008 . Type: Conference paper published in book/proceeding.

**Derluyn, Hannelore; Janssen, Hans; Moonen, Peter; Carmeliet, Jan.**

Moisture transfer across the interface between brick and mortar joint . Presented at: Nordic Symposium on Building Physics 2008 , 2008 . In: Proceedings of the "8th Symposium on Building Physics in the Nordic Countries" , 2008 . Type: Conference paper published in book/proceeding.

**Zukowska, Daria; Popiolek, Zbigniew; Melikov, Arsen Krikor.**

New method for calculation of integral characteristics of thermal plumes . Presented at: Indoor Air 2008: Proceedings of the 11th International Conference on Indoor Air Quality and Climate . Copenhagen, Denmark , 2008 . In: Indoor Air 2008: Proceedings of the 11th International Conference on Indoor Air Quality and Climate , p. Paper ID: 725 / Editor: Strøm-Tejse, Peter ; Olesen, Bjarne W. ; Wargocki, Pawel ; Zukowska, Daria ; Toftum, Jørn -Copenhagen, Denmark : Technical University of Denmark, 2008 . Type: Conference paper published in book/proceeding.

**Johannesson, Björn.**

Interaction between surface charge phenomena and multi-species diffusion in cement based materials. Presented at: Interaction between surface charge phenomena and multi-species diffusion in cement based materials. Nanjing, China , 2008 . In: Interaction between surface charge phenomena and multi-species diffusion in cement based materials. Type: Conference paper published in book/proceeding.

**Wan, M.P.; Chao, C.Y.H.; Sze To, G.N.; Fang, Lei; Melikov, Arsen Krikor.**

Numerical investigation of dispersion and deposition characteristics of expiratory droplets in aircraft cabin . Presented at: Indoor Air 2008 . Copenhagen, Denmark , 2008 . In: 11th International conference on Indoor Air Quality and Climate - Indoor Air 2008 ; Paper ID163 on CRRM . Type: Conference paper published in book/proceeding.

**Iversen, Anne; Nielsen, Toke Rammer; Svendsen, Svend.**

Occupants' satisfaction with the visual environment in a single office with individual lighting and solar shading control . Presented at: Indoor Air 2008 . Copenhagen, Denmark , 2008 . In: Indoor Air 2008 Proceedings . Type: Conference paper published in book/proceeding.

**Balazova, I.; Clausen, Geo; Rindel, Jens H.; Poulsen, T.; Wyon, David Peter.**

Open-plan office environments: A laboratory experiment to examine the effect of office noise and temperature on human perception, comfort and office work performance . Presented at: International conference on Indoor Air Quality and Climate . Copenhagen, Denmark , 2008 . In: the 11th International conference on Indoor Air Quality and Climate - Indoor Air 2008 ; Paper ID: 703 . Type: Conference paper published in book/proceeding.

**Zhang, Y.; Wyon, David Peter; Fang, Lei; Melikov, Arsen Krikor.**

Optimal dynamic control of water feed temperature for heated/cooled seats in summer conditions . Presented at: International conference on Indoor Air Quality and Climate - Indoor Air 2008 . Copenhagen, Denmark , 2008 . In: 11th International conference on Indoor Air Quality and Climate - Indoor Air 2008 ; paper 291 . Type: Conference paper published in book/proceeding.

**Hviid, Christian Anker; Svendsen, Svend.**

Passive ventilation systems with heat recovery and night cooling . Presented at: The 29th AIVC Conference in 2008 . Kyoto , 2008 . In: Proceedings of the 29th AIVC Conference in 2008 : Advanced building ventilation and environmental technology for addressing climate change issues ; 1 , p. 99-104 -Kyoto : National Institute for Land and

Infrastructure Management, Japan, 2008 . Type: Conference paper published in book/proceeding.

**Dragsted, Janne; Fan, Jianhua; Furbo, Simon.**

Performance investigations of differently designed heat-pipe evacuated tubular collectors in the Arctic climate . Presented at: Eurosun 2008 . Lisbon, Portugal , 2008 . In: Eurosun 2008 1 st International conference on solar heating, cooling and buildings : Testing and certification . Type: Conference paper published in book/proceeding.

**Foged, Niels Nielsen; Ingeman-Nielsen, Thomas.**

Permafrost in Marine Deposits at Ilulissat Airport in Greenland, Revisited . Presented at: Ninth International Conference on Permafrost . Fairbanks Alaska , 2008 . In: Proceedings of the Ninth International Conference on Permafrost ; 1 , p. 445-450 -Fairbanks : Institute of Northern Engineering, University of Alaska Fairbanks, 2008 . Type: Conference paper published in book/proceeding.

**Fawcett, Tina; Hvelplund, Frede; Meyer, Niels I.**

Personal Carbon Allowances - with Focus on the Energy Systems in the UK and Denmark . Presented at: International Conference on Energizing Markets . Copenhagen Business School (CBS), Copenhagen, DK , 2008 . In: published by CBS on homepage: <http://energizing-markets.cbs.dk/> : the paper may be down-loaded from indicated CBS homepage -web homepage as indicated above, 2008 . Type: Conference paper published in book/proceeding.

**Almegaard, Henrik. Plate shell structures - statics and stability .**

Presented at: IASS Symposium 2008 . Acapulco, Mexico , 2008 . In: Proceedings of the IASS-SLTE 2008 Symposium . Type: Conference paper published in book/proceeding.

**Schiavon, S.; Melikov, Arsen Krikor.**

Potential cooling energy savings of increasing air movement to setoff the increase of operative temperature in office rooms . Presented at: International conference on Indoor Air Quality and Climate - Indoor Air 2008 . Copenhagen, Denmark , 2008 . In: 11th International conference on Indoor Air Quality and Climate - Indoor Air 2008 ; Paper 701 , 2008 . Type: Conference paper published in book/proceeding.

**Ølgaard, Andreas Breum; Nielsen, Jens Henrik; Olesen, John Forbes; Stang, Henrik.**

Properties of an Adhesive for Structural Glass Applications . Presented at: Challenging Glass , 2008 . In: Challenging Glass , p. 263-272 , 2008 . Type: Conference paper published in book/proceeding.

**Streicher, Wolfgang; Heinz, A; Bony, J; Citherlet, S; Cabeza, L; Schultz, Jørgen Munthe; Furbo, Simon.**

Results of IEA SHC Task 32: Subtask C: Phase Change Materials . Presented at: EuroSun 2008 . Lisbon, Portugal , 2008 . In: EuroSun 2008 Proceedings . Type: Conference paper published in book/proceeding.

**Uchida, Yuichi; Fischer, Gregor; Hishiki, Yoshihiro; Niwa, Junichiro; Rokugo, Keitetsu.**

Review of Japanese recommendations on design and construction of different classes of fiber reinforced concrete and application examples . Presented at: 8th International Symposium on Utilization of High-Strength and High-Performance Concrete . Tokyo, Japan , 2008 . In: 8th International Symposium on Utilization of High-Strength and High-Performance Concrete . Type: Conference paper published in book/proceeding.

**Jönsson, Jeppe.**

Rigid-Plastic Post-Buckling Analysis of Columns and Quadratic Plates . Presented at: Proceedings of the Fifth International Conference on Thin-walled Structures . Brisbane, Australia , 2008 . In: Thin-walled Structures : Recent Innovations and Developments ; Volume 2, Section X- Thin-walled Beams and Columns , p. 1145-1152 -Brisbane, Australia : Queensland University of Technology, 2008 . Type: Conference paper published in book/proceeding.

**Wargocki, Pawel; Knudsen, H..**

Saving energy for ventilation by careful selection of building materials . Presented at: Nordic Symposium on Building Physics . Copenhagen, Denmark , 2008 . In: Nordic Symposium on Building Physics : In. Rode, C. (ed) Proceedings ; 1 , p. 489-496 . Type: Conference paper published in book/proceeding.

**Georgakis, Christos; Barrau, Xavier. Seismic**

Performance of Multi-Span RC Railway Bridges . Presented at: 14th World Conference on Earthquake Engineering . Beijing, China , 2008 .



In: 14th World Conference on Earthquake Engineering -Beijing, China, 2008 . Type: Conference paper published in book/proceeding.

**Gudmundsson, Gudmundur Valur; Ingólfsson, Einar Thór; Einarsson, Baldvin; Bjarn, Bessason.**

Serviceability assessment of three lively footbridges in Reykjavík . Presented at: Third International Conference FOOTBRIDGE 2008 . Porto, Portugal , 2008. In: Third International Conference FOOTBRIDGE 2008 : Footbridges for urban renewal , 2008 . Type: Conference paper published in book/proceeding.

**Täljsten, Björn; Blanksvärd, Thomas; Carolin, Anders.**

Shear crack propagation in MBC strengthened concrete beams” . Presented at: FRP Composites in Civil Engineering . Zurich Switzerland , 2008. In: FRP Composites in Civil Engineering , 2008 . Type: Conference paper published in book/proceeding.

**Hviid, Christian Anker; Nielsen, Toke Rammer; Svendsen, Svend.**

Simple tool to evaluate the impact of daylight on building energy consumption . Presented at: Nordic Symposium on Building Physics . Copenhagen , 2008. In: Proceedings of the 8th Symposium on Building Physics in the Nordic Countries ; 1 , p. 119-126 -Copenhagen : Danish Society of Engineers, 2008 . Type: Conference paper published in book/proceeding.

**Dragsted, Janne; Furbo, Simon; Fan, Jianhua.**

Solar heating systems in the Arctic . Presented at: Bæredygtig energiforsyning i Arktis . Sisimiut, Greenland , 2008. In: Bæredygtig energiforsyning i Arktis : Sol, vind, vand mm. . Type: Conference paper published in book/proceeding.

**Laustsen, Jacob Birck; Santos, Inês; Svendsen, Svend; Traberg-Borup, Steen; Johnsen, Kjeld.**

Solar Shading System Based on Daylight Directing Glass Lamellas . Presented at: Nordic Symposium on Building Physics 2008 , 2008. In: Proceedings of the 8th Symposium on Building Physics in the Nordic countries : Nordic Symposium on Building Physics 2008, NSB2008 , vol: 1, p. 111-118 (2008). Technical University of Denmark . Type: Conference paper published in journal.

**Thür, Alexander; Furbo, Simon.**

Solkombi-kompaktsystem im Praxistest - Ein Messjahr im Demonstrationshaus. In: OTTI Solar Thermie Conference Proceedings , p. 626 (2008). Ostbayerisches Technologie-Transfer-Institut e.V. (OTTI) . Type: Conference paper published in journal.

**Olesen, Bjarne W..**

Stehen prEN 1264 und prEN 15377 im Widerspruch? Neue europäische Normen zum Planen und Bemessen von wasserführenden Flächenheizungen und -kühlungen . Presented at: Internationale Uponor Kongress . Cristoph/Tirol, Germany, 30 March -5 April , 2008. In: 30. Internationale Uponor Kongress , p. 55-62 . Type: Conference paper published in book/proceeding.

**Täljsten, Björn; Bennitz, Anders; Danielsson, Georg.**

Strengthening of a railway bridge with NSMR and CFRP tubes . Presented at: FRP Composites in Civil Engineering . Zurich, Switzerland , 2008. In: FRP Composites in Civil Engineering : Proceedings of the 4th International Conference on FRP Composites in Civil Engineering , 2008 . Type: Conference paper published in book/proceeding.

**Wei, S.; Cheong, D.; Melikov, Arsen Krikor.**

Subjective Assessment of Thermal Environment in a Room Ventilated by a Novel Enhanced Displacement Ventilation System . Presented at: 11th International Conference on Indoor Air Quality and Climate - Indoor Air 2008 . Copenhagen, Denmark , 2008. In: 11th International conference on Indoor Air Quality and Climate - Indoor Air 2008 ; paper 963 . Type: Conference paper published in book/proceeding.

**Täljsten, Björn; Elfgrén, Lennart.**

Sustainable Bridges – A European Integrated Research Project – Background Overview and Results . Presented at: The 5th International Conference on Advanced Composite materials in Bridges and Structures . Winnipeg, Canada, 22-24th of September , 2008. In: The 5th International conference on Advanced Composite Materials in Bridges and Structures , 2008 . Type: Conference paper published in book/proceeding.

**Olesen, Bjarne W..**

Sustainable Heating and Cooling of Buildings . Presented at: International HVAC+R Technology Symposium and exhibition . Istanbul,

Turkey 12-14 May , 2008. In: 8 International HVAC+R Technology Symposium and exhibition . Type: Conference paper published in book/proceeding.

**Woloszyn, Monika; Rode, Carsten; Roux, Jean-Jacques.**

Synthèse sur la modélisation thermo-hygro-aéraulique des bâtiments dans l'Annexe 41 de l'Agence Internationale de l'Energie . Presented at: Conférence IBPSA France 2008, Lyon , 2008. In: Conférence IBPSA France 2008, Lyon , 2008 . Type: Conference paper published in book/proceeding.

**Täljsten, Björn; Puurula, Arto; Enochsson, Ola; Elfgrén, Lennart; Thun, Håkan; Olofsson, Jan; Paulsson, Björn.**

Test of a concrete bridge in Sweden : I. Assessment methods . Presented at: The forth international conference on bridge maintenance, safety and management . Seoul, South Korea, July 13-18 2008 , 2008. In: IABMAS 08 : The fourth international conference on bridge maintenance, safety and management . Type: Conference paper published in book/proceeding.

**Täljsten, Björn; Bergström, Markus; Nordin, Håkan; Enochsson, Ola; Elfgrén, Lennart.**

Test of a concrete bridge in Sweden : II CFRP Strengthening and Structural Health Monitoring . Presented at: IABMAS 08 . Seoul, South Korea, July 13-18 2008 , 2008. In: IABMAS 08 : The fourth international conference on bridge maintenance, safety and management . Type: Conference paper published in book/proceeding.

**Täljsten, Björn; Enochsson, Ola; Puurula, Arto; Thun, Håkan; Olofsson, Jan; Paulsson, Björn.**

Test of a concrete bridge in Sweden : III. Ultimate capacity . Presented at: The fourth international conference on bridge maintenance, safety and management . Seoul, South Korea, 13-16 July 2008 , 2008. In: The fourth international conference on bridge maintenance, safety and management : IABMAS 08 . Type: Conference paper published in book/proceeding.

**Weitzmann, Peter; Pittarello, E.; Olesen, Bjarne W..**

The cooling capacity of the thermo active building system combined with acoustic ceiling . Presented at: Nordic Symposium on Building Physics . Copenhagen, Denmark, 16-18 June , 2008. In: Nordic Symposium on Building Physics . Type: Conference paper published in book/proceeding.

**Janssen, Hans.**

The dependable characterisation of the moisture buffer potential of interior claddings . Presented at: Nordic Symposium on Building Physics 2008 , 2008. In: Proceedings of the “8th Symposium on Building Physics in the Nordic Countries” , 2008 . Type: Conference paper published in book/proceeding.

**Knudsen, H.; Wargocki, Pawel.**

The effect of using low-polluting building materials on perceived air quality and ventilation requirements in real rooms . Presented at: Indoor Air 2008 , . Copenhagen, Denmark , 2008. In: Indoor Air 2008, the 11th International Conference on Indoor Air Quality and Climate : In Strøm-Tejse, P, Olesen, BW, Wargocki, P, Zukowska, D, Toftum, J, (eds) Proceedings ; paper ID 221 (on CD-ROM) . . Type: Conference paper published in book/proceeding.

**Jørgensen, Anders Stühr; Ingeman-Nielsen, Thomas.**

The impact of light-colored pavements on active layer dynamics revealed by Ground-Penetrating Radar monitoring . Presented at: Ninth International Conference on Permafrost . Fairbanks Alaska , 2008. In: Proceedings of the Ninth International Conference on Permafrost ; 1 , p. 865-868 -Fairbanks : Institute of Northern Engineering, University of Alaska Fairbanks, 2008 . Type: Conference paper published in book/proceeding.





**Kwiatkowski, Jerzy; Rode, Carsten; Hansen, Kurt Kielsgaard; Woloszyn, Monika; Roux, Jean-Jacques.**

The influence of surface treatment on mass transfer between air and building material . Presented at: 8th Symposium on Building Physics in the Nordic Countries . Copenhagen , 2008. In: Proceedings of the 8th Symposium on Building Physics in the Nordic Countries ; Volume 1 , p. 661-668 / Corresponding author: Rode, Carsten -Kgs. Lyngby, Denmark : Dept. of Civil Engineering, Technical University of Denmark, 2008 . Type: Conference paper published in book/proceeding.

**Wargocki, Pawel; Wyon, David Peter.**

The performance of schoolwork by children is not affected by short-term electrostatic particle filtration outside the pollen season . Presented at: Indoor Air 2008, International Conference on Indoor Air Quality and Climate . Copenhagen, Denmark , 2008. In: Indoor Air 2008, the 11th International Conference on Indoor Air Quality and Climate : In Strøm-Tejsten, P, Olesen, BW, Wargocki, P, Zukowska, D, Toftum, J, (eds) ; paper ID 120 (on CD-ROM). . Type: Conference paper published in book/proceeding.

**Thyssen, Mikael Hygum; Emmitt, Stephen; Bonke, Sten; Christoffersen, Anders Kirk.**

The Toyota product development system applied to a design management workshop model . Presented at: Annual Conference of the International Group for Lean Construction . Manchester, UK , 2008. In: IGLC 16 Proceedings : 16th Annual Conference of the International Group for Lean Construction ; July 16-18, 2008, Manchester, United Kingdom , p. 507-517 ; Kagioglou, Mike , 2008 . Type: Conference paper published in book/proceeding.

**Yazdanshenas, Eshagh; Furbo, Simon; Bales, Chris.**

Theoretical comparison between solar combisystems based on bikini tanks and tank-in-tank solar combisystems . Presented at: Theoretical comparison between solar combisystems based on bikini tanks and tank-in-tank solar combisystems . EUROSUN conference, Lisbon, Portugal , 2800. In: Proceedings of Eurosun 2008 : 1st International conference on Solar heating, Cooling and Buildings . Type: Conference paper published in book/proceeding.

**Schellen, Lisje; van Marken Lichtenbelt, Wouter; de Wit, Martin; Loomans, Marcel; Friins, Arjan; Toftum, Jørn.**

Thermal comfort, physiological responses and performance during exposure to a moderate temperature drift . Presented at: Indoor Air 2008 . Lyngby, Denmark , 2008. In: Proceedings of the 11th International Conference on Indoor Air Quality and Climate. Eds.: Strøm-Tejsten, P, Olesen, BW, Wargocki, P, Zukowska, D, Toftum, J , p. paper no 555 -Copenhagen : International Centre for Indoor Environment and Energy, 2008 . Type: Conference paper published in book/proceeding.

**Svendsen, Svend; Santos, Inês; Laustsen, Jacob Birck; Kragh, Jesper.**

Tool for selection of windows in dwellings . Presented at: NSB2008, 8th Symposium on Building Physics in the Nordic Countries : Symposium on Building Physics in the Nordic Countries , 2008. In: Proceeding of the 8th Symposium on Building Physics in the Nordic Countries , vol. 1, p. 95-102 (2008). . Type: Conference paper published in journal.

**Jensen, Kasper Lynge; Toftum, Jørn.**

Total building economic consequences of the effect of temperature on mental performance of office workers . Presented at: Indoor Air 2008 . Copenhagen, Denmark , 2008. In: Proceedings of the 11th International Conference on Indoor Air Quality and Climate. Eds.: Strøm-Tejsten, P, Olesen, BW, Wargocki, P, Zukowska, D, Toftum, J , p. paper no 1013 -Copenhagen : International Centre for Indoor Environment and Energy, 2008 . Type: Conference paper published in book/proceeding.

**Jensen, Ole Mejlhede.**

Use of superabsorbent polymers in construction materials . Presented at: Microstructure related durability of cementitious composites . Nanjing, China , 2008. In: Microstructure related durability of cementitious

composites ; 2 , p. 757-764 -Bagneux, France : RILEM publications S.A.R.L., 2008 . Type: Conference paper published in book/proceeding.

**Ingólfsson, Einar Thór; Georgakis, Christos; Svendsen, Martin Nymann.**

Vertical footbridge vibrations: details regarding and experimental validation of the response spectrum methodology . Presented at: Third International Conference FOOTBRIDGE 2008 . Porto, Portugal , 2008. In: Third International Conference FOOTBRIDGE 2008 : Footbridges for urban renewal , 2008 . Type: Conference paper published in book/proceeding.

**Georgakis, Christos; Ingólfsson, Einar Thór.**

Vertical Footbridge Vibrations: The Response Spectrum Methodology . Presented at: Footbridge 2008 . Porto, Portugal , 2008. In: Footbridge 2008 , p. 267-275 -Porto, Portugal, 2008 . Type: Conference paper published in book/proceeding.

**Abuku, Masaru; Janssen, Hans; Roels, Staf.**

Wind-driven rain impact on historical brick wall buildings . Presented at: Nordic Symposium on Building Physics 2008 , 2008. In: Proceedings of the "8th Symposium on Building Physics in the Nordic Countries" , 2008 . Type: Conference paper published in book/proceeding.

**Wyon, David Peter; Wargocki, Pawel.**

Window-opening behaviour when classroom temperature and air quality are manipulated experimentally (ASHRAE 1257-RP) . Presented at: Indoor Air 2008 . Copenhagen, Denmark , 2008. In: Indoor Air 2008, the 11th International Conference on Indoor Air Quality and Climate : In Strøm-Tejsten, P, Olesen, BW, Wargocki, P, Zukowska, D, Toftum, J, (eds) Proceedings ; paper ID 119 (on CD-ROM) . Type: Conference paper published in book/proceeding.

**Samuelsson, Jack; Haagensen, Per; Agerskov, Henning; Marquis, Gary.**

Work in Progress in the Nordic Countries Related to Fatigue of Welded Components and Structures . Presented at: International Institute of Welding Annual Assembly . Graz, Austria , 2008. In: IIW Doc. XIII-2227-08 , p. 1-10 -Graz, Austria : International Institute of Welding, 2008 . Type: Conference paper published in book/proceeding.

**Goltermann, Per.**

Yield lines in plates with reduced, no or alternative reinforcement . Presented at: Nordic Concrete Research Symposium, Sweden, 2008 , 2008. In: Proc. Nordic Concrete and Research Symposium, Sweden, 2008 . Type: Conference paper published in book/proceeding.



## Reports

### Nielsen, Lauge Fuglsang.

A new composite theory and its potential with respect to materials design. In: BYG Rapport ; R-198 . Type: Report.

### Furbo, Simon.

Advanced storage concepts for solar and low energy buildings : IEA Task 32 final report. In: BYG Sagsrapport ; SR 08-01 . Type: Report.

### Svendsen, Svend; Laustsen, Jacob Birk.

Analyse af energikrav til vinduer i energimærkningsordning og BR 2010, 2015 og 2020. In: BYG Sagsrapport ; SR 08-06 . Type: Report.

### Rode, Carsten.

BSim simulering af hygrotermiske forhold i 3 huse. In: BYG Sagsrapport ; SR 08-02 . Type: Report.

### Santos, Inês; Kragh, Jesper; Laustsen, Jacob Birk; Svendsen, Svend.

Designguide til valg af vinduesløsninger i boliger : Slutrapport til BOLIGFONDENKUBEN . Type: Report.

### Tommerup, Henrik M.; Laustsen, Jacob Birk.

Energibesparelser i bygninger i den offentlige sektor. In: BYG Rapport ; R-184 . Type: Report.

### Tommerup, Henrik M..

Energirenovering af typisk parcelhus opført i perioden 1960-1980 : Del1: beregninger. In: BYG Rapport ; R-165 . Type: Report.

### Riberholt, Hilmer.

European spruce - Picea abies - graded by Chinese visual rules. In: BYG Rapport ; R-182 . Type: Report.

### Nielsen, Lauge Fuglsang.

Fatigue of viscoelastic materials : such as wood with overload. In: BYG Rapport ; R-195 . Type: Report.

### Jensen, Pernille Erland.

Fjernelse af tungmetaller fra røggasrensingsprodukter fra affaldsforbrænding. In: BYG Sagsrapport ; SR 08-07 . Type: Report.

### Tommerup, Henrik M.; Svendsen, Svend.

Forslag til nye energikrav til eksisterende bygningers klimaskærm - DTU Byg, 2008 (p. 105). In: DTU Byg Sagsrapport ; 08-05 (DK) . Type: Report.

### Vogelius, Peter.

Fremtidens kompetencer i byggeriet. In: BYG Rapport ; R-179 . Type: Report.

Jensen, Find Møhlolt; Branner, Kim; Nielsen, Per Hørlyk; Berring, Peter; Antvorskov, Troels Skieller; Nielsen, Magda; Lindahl, Morten Michael; Lund, Brian; Jensen, Christian; Reffs, Joan Humble; Nielsen, Rune Frimand; Hjuler Jensen, Peter; McGugan, Malcolm; Borum, Kaj Kvisgård; Skov Hansen, René; Skamris, Carsten; Sørensen, Flemming; Schytt-Nielsen, Rune; Laursen, Jeppe H.; Klein, Marcus; Morris, Andy; Gwayne, Andy; Stang, Henrik; Wedel-Heinen, Jakob; Dear, John P.; Puri, Amit; Fergusson, Alexander. Full Scale Test of a SSP 34m box girder 1. Data report . - Roskilde : Risø National Laboratory for Sustainable Energy, 2008 (p. 151). In: Risø-R-1622(EN) . Type: Report.

Jensen, Find Møhlolt; Branner, Kim; Nielsen, Per Hørlyk; Berring, Peter; Antvorskov, Troels Skieller; Nielsen, Magda; Lindahl, Morten Michael; Reffs, Joan Humble; Hjuler Jensen, Peter; McGugan, Malcolm; Skamris, Carsten; Sørensen, Flemming; Schytt-Nielsen, Rune; Laursen, Jeppe H.; Klein, Marcus; Stang, Henrik; Morris, Andy; Dear, John P.; Puri, Amit; Fergusson, Alexander; Wedel-Heinen, Jakob.

Full Scale Test of a SSP 34m boxgirder 2 : Data report . - Roskilde :

Risø National Laboratory for Sustainable Energy, 2008 (p. 159). In: Risø-R-1588(EN) . Type: Report.

### Goltermann, Per.

Helvægge og dæk af letbeton. Dimensioneringsprincipper for uarmerede vægelementer . - Dansk Beton - BIH : Dansk Beton - BIH, 2008 . Type: Report.

### Rode, Carsten; Hens, Hugo; Janssen, Hans.

IEA Annex 41 whole building heat, air, moisture response : Closing seminar, Nordic Building Physics Conference. In: BYG Rapport ; R-191 . Type: Report.

### Kragh, Jesper.

Lavenergihuset i Sisimiut : Årsrapport for lavenergihusets ydeevne juli 2007-juni 2008. In: BYG Sagsrapport ; SR 08-03 . Type: Report.

### Toftum, Jørn; Olesen, Bjarne W.; Kolarik, Jakub; Mattarolo, Lorenzo; Belkowska, Dorota.

Occupant responses and energy use in buildings with moderately drifting temperatures . - Atlanta, GA, USA : ASHRAE American Society of Heating, Ventilating, and Air-Conditioning Engineers, 2008 (p. 145). Type: Report.

### Rode, Carsten.

Proceedings of the 8th symposium on building physics in the nordic countries : Copenhagen, June 16-18, 2008. In: BYG Rapport ; R-189 . Type: Report.

### Pedersen, Niels; Jensen, Ralph; Goltermann, Per.

State-of-the-Nation : Jernbaner og havne . - Foreningen af Rådgivende Ingeniører : FRI, 2008 . Type: Report.

### Gunnarsen, Lars; Logadóttir, Ásta; Afshari, Alireza; Rode, Carsten; Glendorf, Rikke Møller.

Teglvægges fugtoptag og afgivelse ved pludselige ændringer af den indvendige fugtbelastning - Statens Byggeforskningsinstitut, 2008 . Type: Report.

### Fan, Jianhua; Furbo, Simon; Svendsen, Svend.

TRNSYS simulation of the consumer unit for low energy district heating net. In: BYG Sagsrapport ; SR 08-03 . Type: Report.

### Goltermann, Per.

Vurdering af uarmerede vægges bæreevne. Lodret og vandret belastede vægge . - Dansk Beton - BIH : Dansk Beton - BIH, 2008 . Type: Report.

## PhD theses

Dick-Nielsen, Lars; Stang, Henrik; Poulsen, Peter Noe; Li, Victor C.. Modeling of ECC Materials using Numerical Formulations based on Plasticity , 2008 . Type: PhD Thesis.

### Bekö, Gabriel.

Removal of Particles from the Supply Air of Ventilation Systems Avoiding the Formation of Sensory Pollution Source : Delivery of Clean Air to Building Occupants , 2008/6 (p. 139) . Type: PhD Thesis.

### Bendixen, Mads.

Rådgivende ingeniørers udfordringer : Et praksisstudium i professionel service-innovation med fokus på materialers og menneskers betydning , 200712 (p. 216) ; 170 . Type: PhD Thesis.



## Patents

**Rörig-Dalgaard, Inge; Ottosen, Lisbeth M..**

Method and device for removing an ionic impurity from building structures . 08.04.2008 . Type: Patent.

## MSc theses

**Sara Wisbech Jacobsen Gottlieb**

Rateafhængighed og triaxialforsøg - udrænet forskydningsstyrke for siltet marint ler Anette Krogsbøll, Niels Foged

**Bjarne Poulsen**

Permeability testing of Cementitious Materials by Beam-bending Method  
Arsen Krikor Melikov

**Avdo Fetahagic**

Strengthening of Reinforced Concrete Beams with Carbon Fiber Reinforced Polymers (CFRP) - Application of the Crack Sliding Theory.  
Björn Täljsten

**Kristinn Pétur Skúlason**

Thin High Performace Concrete Structures Reinforced with CFRP - Investigation of Fire Properties Björn Täljsten, Gregor Fischer

**Helgi Þór Guðmundsson**

Applications of Mineralbased Repair System Björn Täljsten, Gregor Fischer

**Matar Ali Muttar Al-Badri**

Thin High Performace Concrete Structures Reinforced with CFRPreinforcement  
Björn Täljsten, Katalin Orosz

**Pedro Natário**

Interlaminar Peeling in Concrete Beams Repaired with CFRP  
Björn Täljsten, Piotr Rusinowski

**Christian Wolf**

Tension of RC Concrete Prisms Strengthened with CFRP Plates  
Björn Täljsten, Piotr Rusinowski

**Ruben Murargi, Jorge Lopes**

Seismic Analysis of the New Icelandic Conference Centre. Christos Georgakis

**Morten Møller van Gils Hansen**

Examination of Forced Cable Vibrations and Their Decay - A Case Study on The Øresund Bridge Christos Georgakis, Holger Koss, Allan Larsen (ex)

**Esben Ehrenreich Thorup, Michael Krolykke**

Cross-beam Configuration in Multi-check Cable Supported Bridges. Christos Georgakis, Lars Jensen (ex)

**Abbas Abdallah**

Structural Design of Multistorey Building. Egil Borchersen

**Søren Udengaard Johansen**

Consequences in Implementing a Digital Building Process. Flemming Vestergaard

**Jesper Ege Rasmussen**

Analyse af DBK som klassifikationssystem. Flemming Vestergaard

**Niels Trelldal**

Integrated Data and Process Control during BIM Design  
Flemming Vestergaard, Carsten Rode

**Frederik Emil Nors, Thomas Berend Nielsen**

Identification of Indoor Environmental Factors and Technical Systems that Safeguard Children's Health in Day Care Facilities. Geo Clausen

**Porunn Sigurdardóttir**

Utilization of Recycled Glass in Concrete . Gregor Fischer

**Lárus Helgi Lárusson**

Detailed Design of a Composite Floor Deck Element Gregor Fischer, Jeppe Jönsson

**Asger Pervez**

Office Building in Six Storeys; Structural Analysis of Main Structure, Concrete Elements and Connections According to Eurocode. Gregor Fischer, Per Kjærbye

**Dorte Bøge Jensen, Pernille Karstoft Bak-Jensen**

Forum Horsens Stadium - Structures. Henning Agerskov, Henrik Tinning (ex)

**Sorin Antonio Susnea Raftopol**

Bygningsprojektering, stål. Henning Agerskov, Per Kjærbye

**Sara Møller Jakobsen**

Bæreevne af pladedragere med hensyn til tværkræfter  
Henning Agerskov, Peter Noe Poulsen, Jesper Gath (ex)

**Ida Lysbeck Madsen**

Financial Updating at the Contractor Skanska. Henrik Buhl, Sten Bonke

**Thomas Groth Harpsøe, Andreas Conrad Lundsteen**

Diaphragm Action in Skandek Roof Elements. Jeppe Jönsson

**Mikkel Christiansen**

Pedestrian Induced Vibrations in Pedestrian Bridges  
Jeppe Jönsson, Einar Thor Ingolfsson

**Helle Krogsgaard**

Investigation of a Joint for Plane-based Shell Structures of Glass  
Jeppe Jönsson, John Forbes Olesen, Anne Bagger

**Andreas Breum Øl-gaard**

Application of an Adhesive in an Mechanically Reinforced Glass Beam  
John Forbes Olesen, Jens Henrik Nielsen, Henrik Stang

**Sine Gustavsen**

Indeklima i skoler. Jørn Toftum

**Finn Larsen**

Light Concrete Structures. Kristian Hertz

**Jesper Prip Bonnesen**

Prestressed Concrete Structures and Fire. Kristian Hertz

**Thomas Bo Frederiksen**

Investigation of Evacuation in High Rise Buildings  
Lars Schiøtt Sørensen

**Jesper Scott Johnsen**

Vandtågeanlægs slukningseffekt belyst ud fra forsøg  
Lars Schiøtt Sørensen, Carsten Palle (ex)

**Karen Ravn**

Undersøgelse af reaktions- og beslutningstid  
Lars Schiøtt Sørensen, Morten B.S. Valkvist (ex)

**Peter Engkilde**

Load Capacity of Reinforced Concrete Shells. Leif Otto Nielsen

**Anja Josefine Hansen, Mette Thyregod**

Determination of Corrosion Initiation of Steel in Concrete  
Mette Rica Geiker, Peter Vagn Nygaard, Per Goltermann

**Cecilia Raab Støvel-bæk**

A Critical Analysis of Citizens's Attitude to their Personal Mobilities  
Morten Elle

**Rikke Munch Bendtsen**

Innovation of Sustainable Building. Morten Elle

**Ikhlas A Ali**

Development of Water Supply in Erbil. Morten Elle

**Ina Sybille Hertz Karlsen, Iben Lyck Froberg**

An Urban Development Project in Copenhagen. Morten Elle, Kristoffer Weiss (ex)

**Srinivasa Raghava Tharimela**

Advanced Rock Mechanical and Physical Studies of Saltwash Sand  
Stone  
Niels Nielsen Foged, Katrine Alling Andreassen, Ida Lykke Fabricius

**Niclas Grønkjær Rasmussen**

Shear Strength of AAC Beams. Per Goltermann

**Anders Ole Stubbe Solgaard, Mikkel Wyrzt**

Inplane Shear Test of Fibre Reinforced Disks. Per Goltermann

**Kristin Islev Knudsen**

Plates in Fibre Reinforced Concrete. Per Goltermann

**Claus Madvig Nielsen**

Bæreevne og levetid af en betonbro. Per Goltermann

**Peter Lind**

Fiberarmerede bjælker. Per Goltermann

**Jonas Sejersbøl Jacobsen**

Mixed Mode plasticitetsanalyse af betonkonstruktioner  
Peter Noe Poulsen, Leif Otto Nielsen

**Julie Malbæk**

Static and Dynamic Analysis of Ca-blestayed Pedestrian Bridge  
Peter Noe Poulsen, Niels Jørgen Gimsing

**Jacob Maare Pedersen**

Study of the Failure Properties of Treated Wood with Focus on  
Brittleness  
Sigurdur Ormarsson, Staffan Svensson

**Roberto Gimenez Mata**

Inlet Stratifiers for Solar Tanks. Simon Furbo, Elsa Andersen

**Kim Obel Nielsen, Mathias Gjendal**

Experimental Methods for Determining the Longterm Strength of  
Wood  
Staffan Svensson, Tho-mas Astrup

**Frank Schou kruse Pedersen**

Use of Risk Management in the Danish Construction Industry. Sten  
Bonke

**Morten Elleskov Christensen**

Planning and Management Principles in Construction  
Sten Bonke, Henrik Sørensen (ex)

**Sarah Leenknecht, Jonas Vandermaesen**

Methodology of Integrated Design of Low Energy Office Building  
Svend Svendsen

**Gonzalo Obrador Sánchez**

Heating System for Low-Energy Houses. Svend Svendsen

**Louise Finnerup Wille**

Integreret design af bygninger med fokus på dagslys og belysning  
Svend Svendsen

**Maja Heiede**

Development and Investigation of Passive Ventilation Systems  
Svend Svendsen, Christian Anker Hviid

**Michael Jørgensen, Jakob Strømmand-Andersen**

Use and Development of Integrated Design Method for Large  
Buildings. Svend Svendsen, Lotte Bjerregaard Jensen

**Inooraq Brandt**

Geofysiske undersøgelser af permafrostrelaterede strukturelle skader  
på veje og landingsbaner i Thule, Grønland. Thomas Ingeman-Nielsen,  
Niels Foged

**Lars Lehn Rasmussen, Camilla Dyring**

Supply of Makeup Air in Mechanically Ventilated Low Energy Houses  
Toke Rammer Nielsen

**Anne Kirkegaard Meibom**

Demand Controlled Ventilation in Single Family Houses. Toke Ram-  
mer Nielsen

**Tina Bull Kipper**

Energirenovering af enfamiliehuse. Toke Rammer Nielsen, Jesper  
Engelmark

**Lina Wikstrøm, Martin Vraa Nielsen**

Analyse af indeklima og brandsikkerhed for den danske pavillon til  
Expo 2008 samt efterfølgende konvertering til kontorareal  
Toke Rammer Nielsen, Lotte Bjerregaard Jensen, Lars Schiøtt Sørensen

**BEng theses****Anders Christian Pinholt Kancir**

Structural Design of Building. Per Oluf H Kjørbye, Per Goltermann

**Mads Devantier Dysted Nielsen, Henrik Peter Møller**

Urban Development and Planning  
Susanne Balslev Nielsen, Vibeke Møgelvang Nielsen

**Jonas Eik Jacobsen**

Day Light in Office Buildings. Svend Svendsen

**Christoffer Anton Plesner-Petersen, Steven Ipsen**

The House based on Kyoto 2020 - Energy Consumption of 2020  
Toke Rammer Nielsen

**Lene Westh**

Lavenergi-enfamiliehus hævet på pæle. Toke Rammer Nielsen

**Tina Vickie Aagesen, Kristjana Ósk Birgisdóttir**

Sustainable School Building  
Toke Rammer Nielsen, Per Oluf H Kjørbye

**Kim Eriksen, Henrik Gunnar Pedersen**

Materials for Arctic Road Construction. Arne Villumsen

**Mette Hersom Hansen**

Tagboliger. Egil Borchersen

**Christian Jøns Nielsen, Jesper Jøns Nielsen**

Projektering af fleretagers betonelementbyggeri. Egil Borchersen

**Michael Strøm**

Projektering af fleretagers betonelementbyggeri. Egil Borchersen





**Stefan Gregers Brandt Johansen, Bjarke Stenaa Ørvad**  
Digital Architecture - Computer Modelling as basis for Design and Production with Developable Surfaces. Hans Peter Nielsen

**Trine Vibeke Bay, Kaja Stenrød Paulsen**  
Innovative Material and Assembly Method - Test of Adhesive Joints between Composite Profiles of Glass Fibre Reinforced Polymers  
Kurt Kielsgaard Hansen, Lotte Bjerregaard Jensen

**Navid Sidiqi, Anders Hornshov Jakobsen**  
Styrke- og holdbarhedsundersøgelser af hvid plastfiberarmeret beton til LightHouse-projektet. Kurt Kielsgaard Hansen, Lotte Bjerregaard, Gregor Fischer

**Christian Møller Nielsen, Rune Jon Andersen**  
New Tile with Aggregate of Expanded Sintered Clay Used for Cladding. Tile Mortar Fixing Tests and Design for Mounting  
Kurt Kielsgaard Hansen, Teresa Surzycka, Snorre Stephensen

**Louise Stubtoft Kærgaard, Eva Kirstine Fabricius**  
Charcoal Boards - Material Properties and Design  
Lotte Bjerregaard Jensen, Kurt Kielsgaard Hansen

**Brigitte Andersen, Katrine Hauerslev**  
Car Park in Ørestad. Lotte Bjerregaard Jensen, Palle Sehested (ex)

**Nina Pagh Koch, Jacob Jul Sørensen**  
Sustainability as a Basis of Architectural Design. Morten Elle, Teresa Surzycka

**Lill Bjerregaard Christensen, Casper Gullach**  
Urban Planning and Urban Development. Morten Elle, Vibeke Møgelvang Nielsen

**Niels Andreas Castberg**  
Bus Shelter - An Interplay between Materials, Constructions and Design in City Furniture, Per Goltermann, Per Oluf H Kjørbye, Teresa Surzycka

**Jeremias David Elleby Sørensen**  
Implementation of Digital Construction in Small Companies  
Flemming Vestergaard

**Dennis Kristensen, Martin Krogh Hansen**  
Investigation of the Stress-crack Opening Behaviour of Hybrid Fiber Reinforced Concrete, Gregor Fischer

**Pernille Grønnegaard Pedersen, Mette Blond**  
Structural Improvements of Composite Deck System  
Gregor Fischer, Jeppe Jönsson

**Morten Richter Jørgensen**  
Process and Financial Control in Construction. Henrik Buhl

**Cheng Ung Poun**  
Plasticity and Plate Buckling. Jeppe Jönsson

**Mads Nørgaard, Joseph Quoc Thanh Nguyen**  
Forbedring af produktivitet i moderne kontorbyggeri. Jørgen Erik Christensen

**Mette Tranberg Werheimeister, Trine Kræmer**  
Hydraulic Limes for Restoration. Kurt Kielsgaard Hansen

**Christian Nerup Sørensen, Mathias Haase**  
Possible Influence of Casting Height on Properties and Microstructure of Hardened Self Compacting Concrete. Kurt Kielsgaard Hansen, Peter Laugesen (ex)

**Jens Nørhave Kastvig**  
Designbrande. Lars Schjøtt Sørensen

**Morten Nymark, Thomas Blok**  
Copper Electrodes for Wood Preservation  
Lisbeth M. Ottosen, Iben Vernegren Christensen

**Marius Bruus-Jensen, Jonas Damgaard Sørensen**  
Introduction of TrimByg in the Work of Craftsmen. Niclas Andersson

**Thor Ugelvig Petersen, Anders Plesner Bruun**  
Scheduling - Development, Utilization and Distribution of the Time Schedule  
Niclas Andersson

**Rasmus Louis Christian Meldal Kolding, Jimmy Bloch Sørensen**  
Anvendelse af beton til slidlag på veje. Ole Hededal, Jan Jansen, Finn Thøgersen (ex)

**Nicolai Kragh-Hansen**  
Risikostyring i en entreprenørvirksomhed. Per Anker Jensen

**Søren Heron, Rasmus Juul Jensen**  
Transversely Loaded Lightweight Concrete Columns. Per Goltermann

**Naseer Fattah Mohammed**  
Kontorhus, betonelementer. Per Goltermann, Per Kjørbye

**Zeki Yilmaz**  
Kontorhus, betonelementer. Per Goltermann, Per Kjørbye

**Sarfaraz Khan, Mustafa Moussa el-Cheikh Hassan**  
Bygningsprojektering, boliger. Per Kjørbye, Per Goltermann

**Mikkel Kjærøvig Broe**  
Row Houses

**Tim Mansour, Christian Kaiser Oldenburg**  
Økonomiske, stabile og let-opsættelige konstruktioner i den tredje verden  
Per Kjørbye, Per Goltermann

**Faruk Kurtis, Rasmus Louis Frederiksen**  
Housing Construction in 1 to 1½ Levels - Planning, Designing and Construction

**Christian Lærke Pedersen, Martin Steen Svensson**  
New Bridge by 'Kvæsthusmølen'. Peter Noe Poulsen, Jesper Gath (ex)

**Anders Niklas Dobson Mørk**  
Shinking Measurement on Treated and Untreated Wood  
Staffan Svensson, Kurt Kielsgaard Hansen, Emil T. Englund

**Niclas Biel Olsen, Tine Ninn Løjstrup**  
Strategic Partnering in Construction. Sten Bonke

**Esben Leth Jacobsen, Patrick Dehn**  
Concepts in Construction. Sten Bonke

**Jesper Feldthaus, Nicklas Girel**  
Management of Precast Concrete Deliveries  
Sten Bonke, Knud Christensen

**Johannes Martin Utoft Christensen, Martin Wilhelm Økenholt Larsen**  
Integrated Design of Energy Efficient Glass Facades and Lighting Systems  
Svend Svendsen

**Torben Seemann**  
Energy Renovation of Apartment Block. Svend Svendsen

**Peter Rydahl**  
Buckling of Wood Based I-beams. Søren Traberg, Sigurdur Ormarsson

**Troels Grønbech Petersen**  
Investigation of Beams with Thin Web. Søren Traberg, Sigurdur Ormarsson



**Morten Hjalmar Thomsen, Morten Kamuk Tafdrup**  
Energirigtig renovering. Toke Rammer Nielsen

**Paninguak Petersen**  
Materials for Roads in Greenland. Arne Villumsen, Kristian Lennert

**Torkild Narud**  
Steel Structures in Greenlandic Houses. Egil Borchersen

## BSc theses

**Lars Hagsted Rasmussen, Sebastian Schjelde Ebbe**  
Moisture Transport and Sorption in Cement Based Materials - Measurement and Theoretical Analysis  
Björn Johannesson, Kurt Kielsgaard Hansen

**Ask Tonsgaard Andersen**  
Insulation with Drainage Capabilities  
Carsten Rode

**Simon Sigurd Henriksen, Amalie Gunner**  
Temperaturstabilisering med faseændringsmaterialer  
Carsten Rode, Geo Clausen

**Andreas Claus Hansen**  
The Engineer's Management Functions in Relation to Social and Psychological Working Environment  
Elsebet Frydendal Pedersen

**Dorte Partov**  
Indeklima i danske boliger  
Geo Clausen

**Christopher Just Johnston**  
Sammenhæng mellem luftskifte i boliger og astma/allergi  
Geo Clausen, Jørn Toftum

**Miki Kobayashi**  
Gitterdrager i træ og stål  
Henrik Almegaard

**Anne Lolk Jensen, Lise Nygaard Jensen**  
Konstruktive løsninger til fremtidens lavenergitypehuse  
Henrik Almegaard, Svend Svendsen

**Henrik Mehlsen, Kristian Schmidt Bertelsen**  
Undersøgelse og modellering af bulingsdrevet delaminering  
Henrik Stang

**Cecilie Vej-Hansen**  
Optimization of Steel Fibre Reinforced Concrete  
Henrik Stang, Mette Geiker

**Mohammad Muhsen, Charlie Boye Svensson**  
Udvikling af beslag til samling af glastværsnit  
Jeppe Jönsson

**Mads Højmark-Jensen**  
Revnevidder i armerede betonbjælker/søjler  
John Forbes Olesen, Peter Noe Poulsen

**Ricardo Antonio Barbosa, Sidsel Juhlin**  
Investigation of Salt Deterioration of Natural Stones  
Kurt Kielsgaard Hansen, Bent Grell (ex), Poul Klenz Larsen (ex)

**Christian Bacher Hjorth**  
Elektrokemisk fjernelse af salt fra murværk  
Lisbeth M. Ottosen

**Mads Mønster Jensen, Jon Jakobsen Høj**  
Permeability Testing of Cementitious Materials by Beam-bending Method  
Mette Geiker, Björn Johannesson

**Daniel Per Skaarup, Michael Julsbo Nygaard**  
Optimering af fiberarmeret beton  
Mette Geiker, Henrik Stang

**Martin Kuld**  
Højere ordens Finite Elementer - for skiver og plader inden for bygningsmekanik  
Peter Noe Poulsen

**Jacob Herold Høgh, Jacob Paamand Waldbjørn**  
Analyse af stålkonstruktioner under hensyntagen til rummelig udknækning  
Peter Noe Poulsen, Jesper Gath

**Ole Kruse, Eyðbjörn Dal Jakupsson**  
Undersøgelse af hjørnesamling med dæmper  
Sigurdur Ormarsson

**Ulf Gjendal**  
Public Private Partnership in Denmark and Germany  
Sten Bonke

**Søren Marienlund Andersen, Jan Vig Nielsen**  
Udformning og analyse af spærfodsamling  
Søren Traberg, Sigurdur Ormarsson

**Søren Nykjær Boje**  
Geotechnical and Geophysical Investigations at Itinnet, Sisimiut, Central West Greenland  
Thomas Ingeman-Nielsen, Arne Villumsen



## Staff

As of December 31 2008		2008	2007	2006	2005	2004
Scientific	Professor	7	7	7	9	11
	Associate Professor	40	40	46	38	44
	Assistant Professor	8	7	10	15	15
	Other VIP	9	9	9	6	4
	PhD Students	51	42	37	44	40
Total		115	105	109	112	114
Technical and Administrative	Academic	9	9	11	11	10
	Clerical	11	13	13	12	12
	Technician	21	20	18	22	22
	Other	9	7	5	5	4
Total		50	49	47	50	48
Total Department Staff		165	154	156	162	162

## Education

STÅ <sup>1</sup> -total		494	514	483	508	519
Projects (students)	MSc	74	88	85	92	74
	BSc	34	51	31	36	56
	BEng	84	119	130	62	82
Admission (students)	BSc (Building Technology)	65	58	62	72	60
	BEng (Architectural Engineering)	45	47	50	52	42
	BEng (Civil Engineering-summer)	82	84	75	63	58
	BEng (Civil Engineering-winter)	39	29	38	30	32
	BEng (Arctic Technology)	19	18	8	9	8

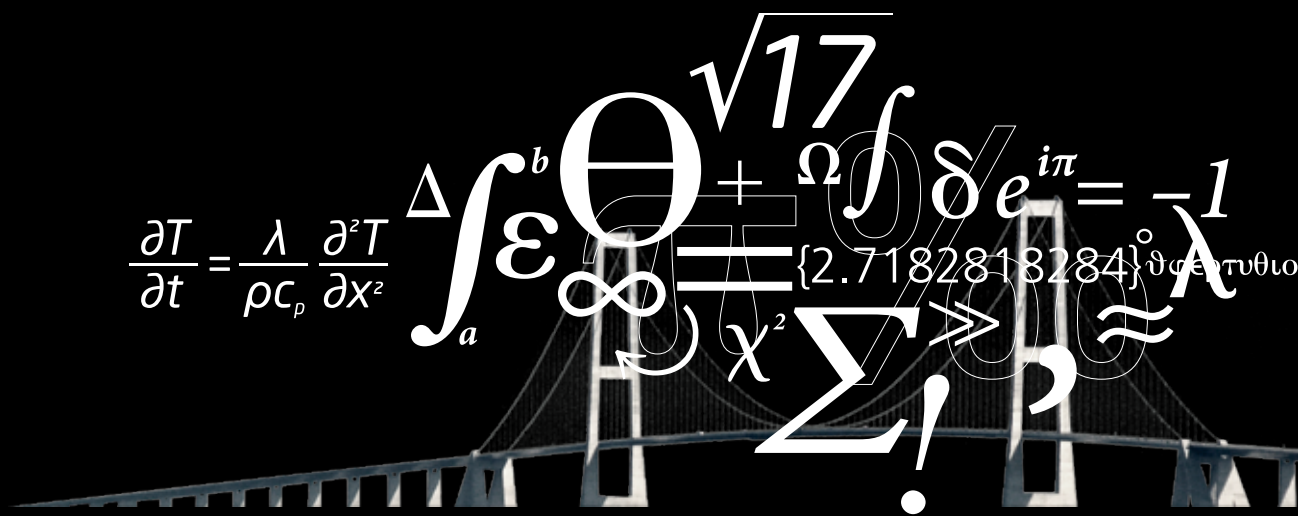
## Research

Refereed papers	Total	50	67	45	61	63
	Of these in ISI	47	48	30	43	37
PhD theses		3	13	5	8	10
Doctoral theses		0	0	0	1	0

## Finances

Revenues	DTU-grant	66.718	59.827	56.656	53.184	52.523
	External revenue	46.489	30.326	31.033	30.862	28.563
	Total	113.207	90.153	87.689	84.046	81.094
Expenditures	Wages	68.846	66.782	63.021	62.725	62.917
	Other expenses	31.933	23.954	26.420	19.628	16.445
Total		100.779	90.736	89.441	82.353	79.362
Result		12.428	-583	-1.757	1.693	1.732
Available amount	January 1	7.839	6.200	7.957	6.264	4.532
Carried forward	December 31	9.054	5.617	6.200	7.957	6.264

STÅ<sup>1</sup>: 1 STÅ is one student annual work (1 STÅ=60 ects points)





DTU Civil Engineering  
Technical University of Denmark, Brovej, Building 118  
DK-2800 Kgs. Lyngby

Phone +45 4525 1700  
Fax +45 4588 3282  
[byg@byg.dtu.dk](mailto:byg@byg.dtu.dk)  
[www.byg.dtu.dk](http://www.byg.dtu.dk)